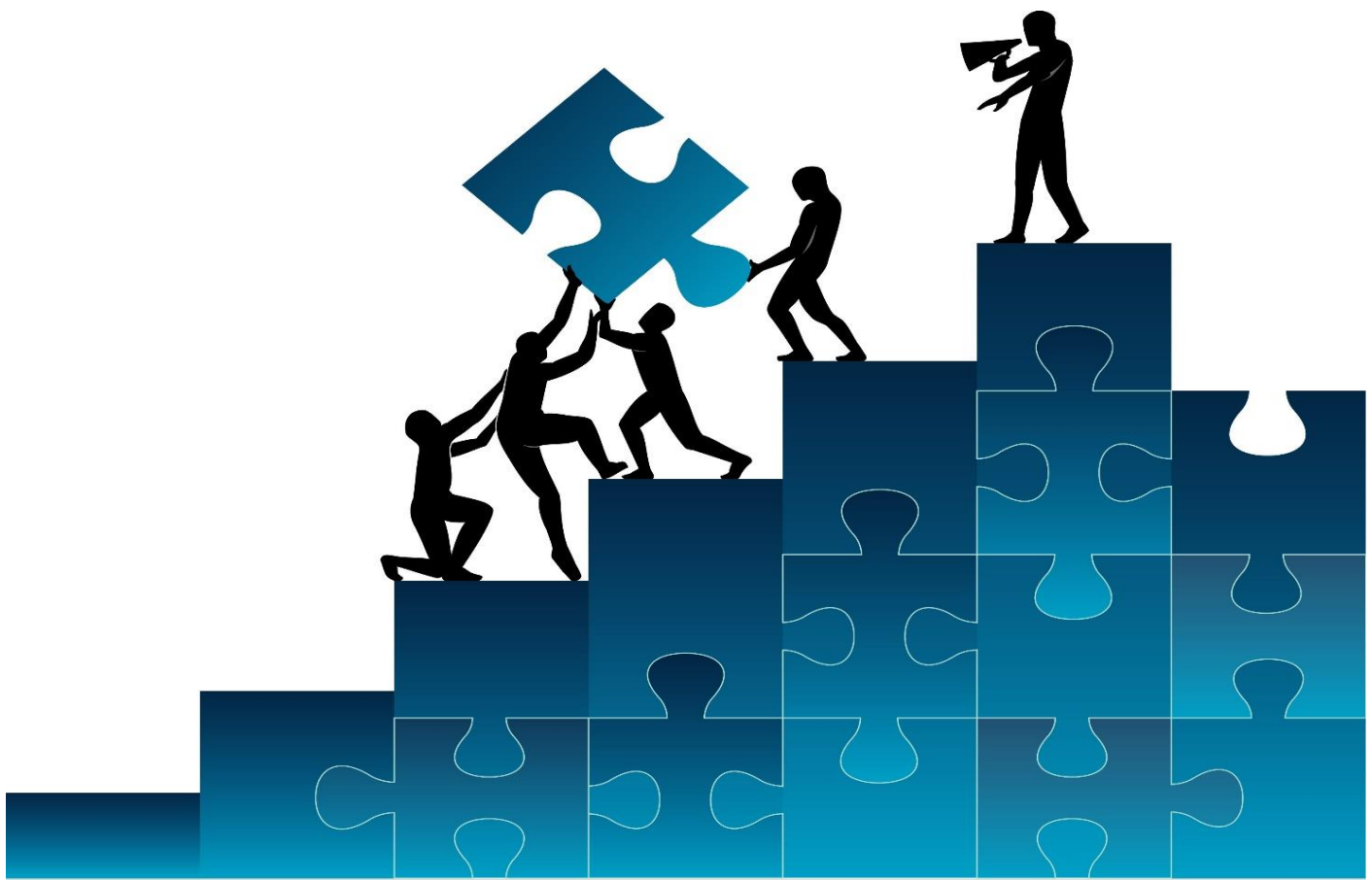




*Collaborating Across Lines
To Build Up Lives*



57th NAWRS Workshop

July 28 – July 31, 2019

**The Omni Royal Orleans Hotel
New Orleans, Louisiana**

WELCOME

Dear Friends and Colleagues,

On behalf of the National Association for Welfare Research and Statistics (NAWRS) Board of Directors, it is my pleasure to welcome you to the 57th Annual Workshop, “Collaborating Across Lines to Build Up Lives” and to the amazing city of New Orleans. New Orleans is world-known for its music, cuisine, unique dialect, annual celebration and festivals. The city has been described as the “most unique” in the United States owing in large part of its cross-cultural and multilingual heritage. During the next few wonderful days, you will have an opportunity to learn from research and network with colleagues across many different disciplines representing many different areas from around the country. Through plenaries, breakout sessions, research academy, the President’s reception, and Tuesday evening event, this conference offers an amazing opportunity to build knowledge and connections to increase your skills and knowledge as an evaluator or a practitioner. We hope that you will find better way to include research in your program design, as, collectively, we are focusing on creating the best interventions that have long lasting effects on human lives. We have presentations on topics including child support, coaching, early childhood education, child care, foster care, substance abuse, trauma-informed care, reentry services, behavior interventions, workforce programs, and career pathways among others. The array of different presenters will demonstrate a need to build integrated human services systems that focus on ensuring successful families through supporting and promoting opportunities for families to meet their goals, dreams and aspirations, but remains evidence-driven and informed.



Throughout the years, I have personally benefited in many ways from opportunities to attend NAWRS workshops, build connections and apply knowledge from all of the wonderful presentations. I took what was presented and used it to create an evidence-informed public assistance system fueled by the participant choice, grounded in the four E’s (Engagement, Education, Employment and Employment Retention) and developed success indicators and supports for participants to strengthen their essential skills, personal agency and self-determination.

NAWRS workshops have been engaging government policy makers and researchers since the late 1950s. Over the nearly 70 years of NAWRS’ workshops have changed and evolved with time, but the main commitment to promote the exchange of ideas on how research can contribute in development and administration of effective human service program remains. We have an amazing program this year, developed by an incredible committee of the individuals, under the leadership of Program Committee Chairs: Letitia Logan Passarella (University of Maryland School of Social Work) and Correne Saunders (Abt Associates). We are in the heart of New Orleans, in the Omni Royal Orleans, located on the most fashionable corner of St. Louis and Royal. Thank you to the incredible work of the conference planning committee under the leadership of Vice President, Nancy Aguirre (County of Riverside, Department of Public Social Services). Thank you to our board of directors who invested hours of their time to make our workshop possible: Sarah Leopold, Treasurer (Colorado Department of Human Services), LaTamera Woodly, Secretary (Tennessee Department of Human Services), Theresa Anderson (The Urban Institute), Seth Chizeck (Allegheny County Department of Human Services), Kinsey Dinan (New York Department of Social Services), Hilary Foster, Federal Liaison (U.S. Department of Health and Human Services, Administration for Children and Families), Asaph Glosser (MEF Associates), Kerry Glova, Registrar (Catholic Charities USA), Kristen Joyce (Mathematica Policy Research), Edith Kealy (New York City Department of Social Services), Karin Martinson (ABT Associates), Tony Ong, Technology Lead (Public Consulting Group), Angela Rachidi (Mathematica Policy Research), Shane Riddle (Washington Department of Social and Health Services), Mary Roberto (Manhattan Strategy Group), Barbara Startz (Oklahoma Department of Human Services), Larry Timmerman (Ramsey County Health and Human Services/Workforce Solutions). I want to thank you, the group of amazing volunteers who, together, with the Board of directors, helped not only to organize the conference, but ensure success of the conference. I also want to thank the hotel staff for all of the support they have provided to us to make sure that we all have an amazing experience.

Nothing is possible without our sponsors. I want to acknowledge our incredible sponsors: MDRC, Public Consulting Group, Abt Associates, Mathematica, MEF Associates, OPRE SSRC, TuaPath, Change and Innovation Agency, Public Strategies, Manhattan Strategy Group, and Insight Policy Research.

Finally, I want to thank you everyone for being here! I am looking forward to spending the next few days together, getting to know you, helping you get engaged and stay engaged, network and learn from each other. Please feel free to stop by the Hospitality Suite, which is located in the Royal Suite, to relax and get to know your fellow attendees. Please ask me or any other Board members for assistance if there is anything you need.

Respectfully,

Yekaterina (Kate) Probert Fagundes
NAWRS President



Learning What Works to Improve the Lives of Low-Income People

MDRC offers comprehensive research-based services and technical assistance to government and nonprofit agencies so they can validate and continuously improve their programs. We measure the difference your program is making by asking *who it serves* and *how it helps* — and *how it can do even better*. With more than 40 years of experience and fully one-third of our expert team made up of former administrators, teachers, and front-line human service workers, *we know programs and the systems in which they operate*.



New York

Oakland, CA

Washington, DC

Los Angeles

www.mdrc.org



At PCG, we work to
deliver solutions that
change lives for the better.
Solutions that matter.



www.publicconsultinggroup.com

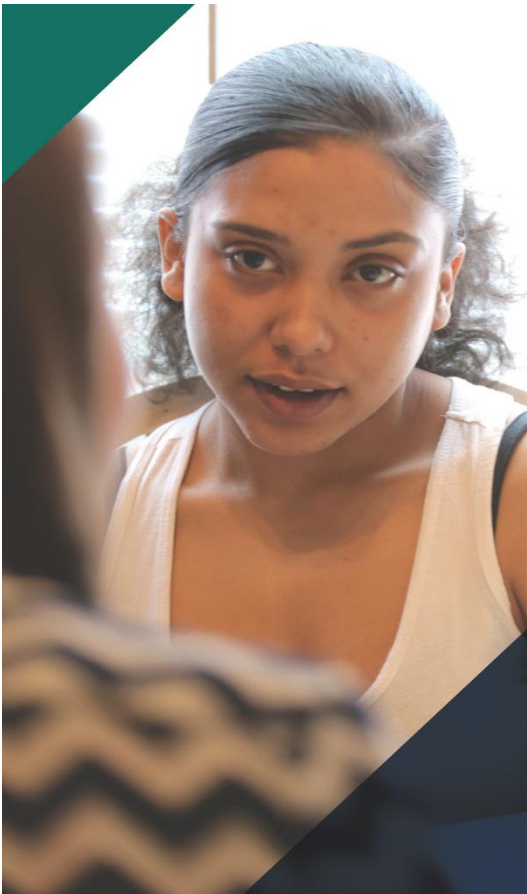


Bold Ideas. Real Results.

Abt's multidisciplinary teams bring bold approaches and establish the evidence to help administrators and policymakers solve tough challenges.

See how our research and technical assistance make a difference in helping to move people from vulnerability to security.

abtassociates.com



Mathematica and NAWRS Partners in Progress

Mathematica is the insight partner that illuminates the path to progress for public and private sector changemakers. Reimagining the way the world gathers and uses data, we uncover the evidence that offers our partners the confidence and clarity they need to find out what can be done, how to make it happen, and where to go next. Our experts dive into urgent social challenges with rigor and objectivity to surface evidence and understanding that weathers the toughest tests.



mathematica-mpr.com

Princeton, NJ / Ann Arbor, MI / Cambridge, MA / Chicago, IL / Oakland, CA / Seattle, WA / Tucson, AZ / Washington, DC / Woodlawn, MD

EDI Global: High Wycombe, United Kingdom / Bukoba, Tanzania / Dar Es Salaam, Tanzania



Celebrating 10 years of
rigorous, independent, and
mission-based policy
research and evaluation.

— 2009 - 2019 —

Connect with us!



mefassociates.com



@MEF_Associates



CHANGING THE COACHING EQUATION

**TuaPath provides the right combination
of online tools for your program.**

The innovative platform streamlines
the tracking of work activities to reduce
administrative and paperwork demands
and increase bandwidth for coaching.

Goals are identified and progress is
monitored to achieve self-sufficiency and
build executive skills that last a lifetime.

Find out how TuaPath can help your program.
Visit our booth in the exhibit hall.
www.tuapath.com / 970.628.0220



How can you help more children and families?

Please join us ...

and discover how some child welfare agencies across the country are using capacity data to defy the status quo and adopting new, innovative approaches to increase their capacity to keep kids safe.

What:

Our Child Welfare Capacity Crisis:

Why everything we think will help ... won't

When:

Monday, July 29 – 11:00 a.m.

Where:

See conference agenda

Contact us for a free assessment to identify your agency's capacity potential.



Change & Innovation Agency

www.ChangeAgents.info | 678.983.7939

OPRESSRC.ORG

@OPRE_SSRC



Self-Sufficiency
RESEARCH CLEARINGHOUSE

Funded by the Office of Planning, Research, and Evaluation, the SSRC is an online portal of research on economic mobility for vulnerable populations. It aims to improve policy and practice by providing access to field tested, evidence-informed, and evidence-based program and policy strategies.



Data Sets and Sources Compendium including tips to find and use data sources.



Webinar Series featuring topics on the minimum wage, the EITC, and more.



Bi-Monthly E-Newsletter sharing upcoming events and featured resources.

SSRC Selections providing pre-curated research highlights; **SSRC Notes** synthesizing literature on current topics.

This product was produced by ICF with funding provided by the United States Department of Health and Human Services, Administration for Children and Families, Grant: 90PD0298

LUNCH HOST



BREAKFAST HOST



BREAK HOST



The National Association of Welfare Research and Statistics (NAWRS) is a 501(c)(3) non-profit association whose purpose is to promote the exchange of ideas on how research and statistical analysis can contribute to the development and administration of effective human services programs.

The membership of NAWRS includes representatives from federal, state, local government, universities and research organizations. NAWRS represents the full spectrum of human services programs. NAWRS membership is open to all persons interested in public human services programs.

NAWRS BOARD OF DIRECTORS

Officers

President	Kate Probert-Fagundes, Carver County, Minnesota
Vice President	Nancy Aguirre, Riverside County, California
Treasurer	Sarah Leopold, Center for Work Education and Employment
Secretary	LaTamera Woodley, Tennessee
Federal Liaison	Hilary Forster, Administration for Children and Families

Directors

Co-Chair, 2019 Program Committee	Letitia Passarella, University of Maryland
Co-Chair, 2019 Program Committee	Correne Saunders, Abt Associates
Co-Chair, 2018 Virtual Program Committee	Asaph Glosser, MEF Associates
Co-Chair, 2018 Virtual Program Committee	Edith Kealey, NYC Department of Social Services
Registrar	Kerry Glova, Catholic Charities USA
At Large; Co-Chair, Marketing and Volunteer Committee	Theresa Anderson, Urban Institute
Co-Chair, Marketing and Volunteer Committee	Karin Martinson, Abt Associates
At Large; Co-Chair, Strategic Planning Committee	Angela Rachidi, Mathematica
Co-Chair, Strategic Planning Committee	Mary Roberto, Manhattan Strategy Group
At Large; Chair, Finance and Budget Committee	Barbara Startz, Oklahoma Department of Human Services
At Large	Seth Chizeck, Allegheny County Department of Human Services
At Large; Technology Lead	Tony Ong, Public Consulting Group
At Large	Shane Riddle, Washington Department of Social and Health Services
At Large	Larry Timmerman, Ramsey County Workforce Solutions
Ex Officio	Kinsey Dinan, NYC Department of Social Services
Ex Officio	Kristen Joyce, Mathematica

Webmaster

Patty Montoya

SPECIAL TUESDAY EVENING NETWORKING RECEPTION



Please plan to arrive no later than 6:15pm
Event is limited to the first 100 guests who RSVP.

1104 Decatur Street
6:00 pm–10:00 pm

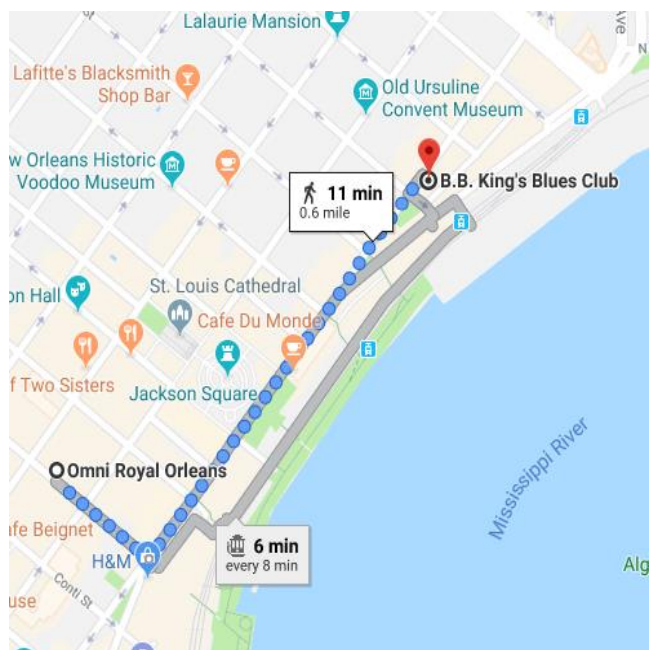
- Featuring live entertainment
- Known for its famous barbeque and Southern-inspired cuisine
- Dinner and drinks will be provided

B.B. King Blues Club is located about 0.5 miles from the hotel.

Walking directions:

- Southeast on St. Louis Street towards Chartres Street 0.1 miles
- Turn left on Decatur Street 0.4 miles

For car service, see a volunteer in the lobby.



THE OMNI ROYAL ORLEANS HOTEL

Workshop sessions will take place on the 1st and 2nd Levels

Plenaries will convene in the Grand Salon and meals in the Esplanade Complex.

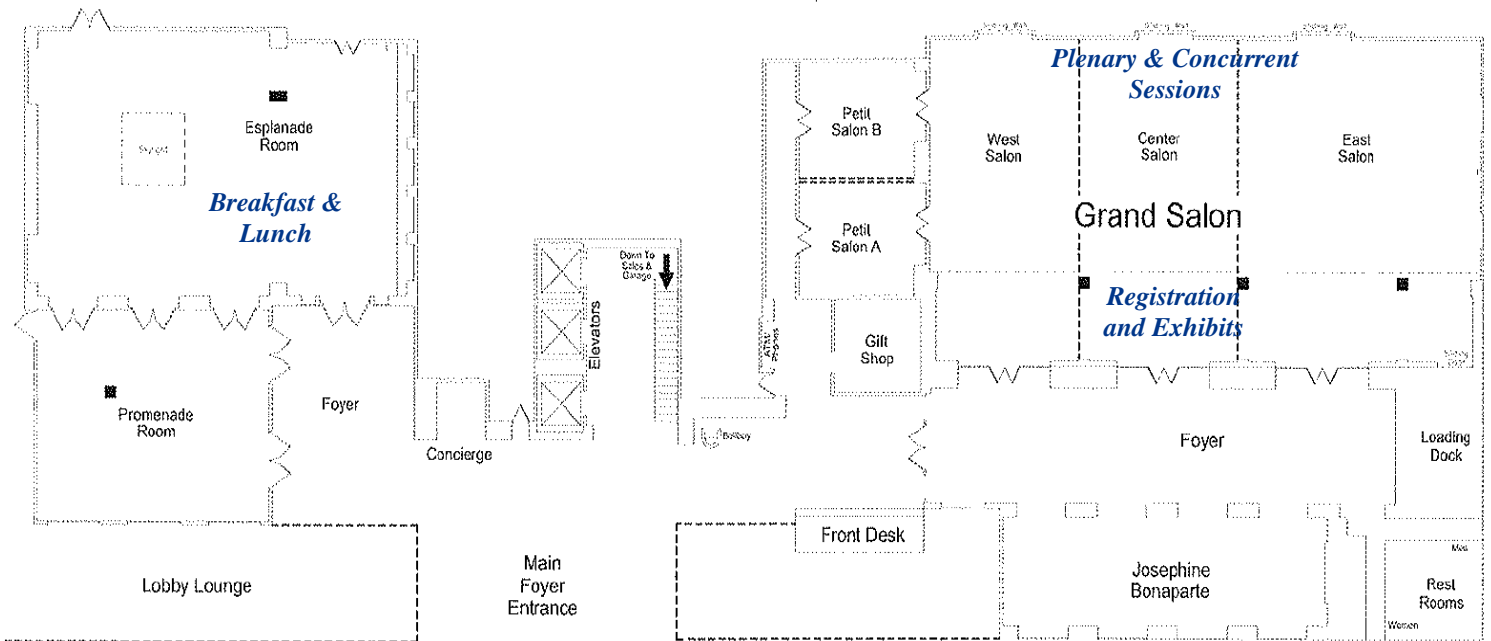
Visit Our Sponsor Booths on the 1st Level

The Sunday Evening President's Reception will be in the Royal Garden Terrace on the 2nd Level

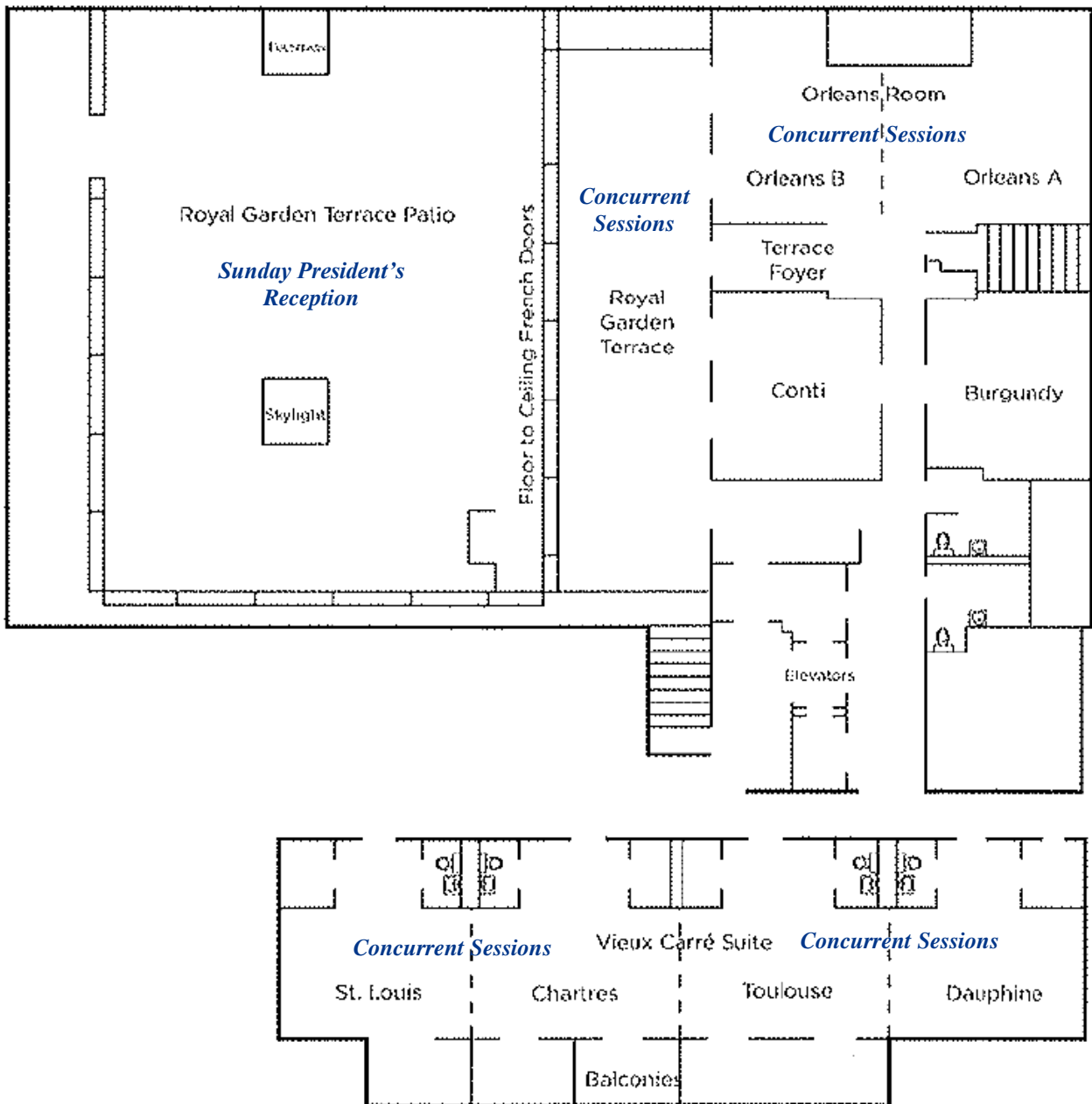
+ *In case of an emergency dial 911 and notify the hotel front desk staff*

First Floor Promenade

First Floor Grand Salon



Second Floor Meeting Spaces



AGENDA AT A GLANCE

Sunday, July 28	<u>President's Reception</u>	5:00pm–7:00pm Royal Garden Terrace
Monday, July 29	<u>Welcome</u>	8:00am–8:15am Grand Salon
	<u>Morning Plenary</u> Collaboration at the Federal Level: Promoting Father Engagement	8:15am–9:15am Grand Salon
	<u>Concurrent Session I</u>	9:30am–10:45am
	<u>Concurrent Session II</u>	11:00am–12:15pm
	<u>Lunch</u>	12:15pm–1:10pm Esplanade Complex
	<u>Afternoon Plenary</u> Breaking the Cycle of Poverty by Designing Programs for All Family Members	1:15pm–2:15pm Grand Salon
	<u>Concurrent Session III</u>	2:30pm–3:45pm
	<u>Concurrent Session IV</u>	4:00pm–5:15pm
Tuesday, July 30	<u>Announcements and Morning Plenary</u> The Critical Role of Executive Skills in Goal Setting and Attainment	8:00am–9:15am Grand Salon
	<u>Concurrent Session V</u>	9:30am–10:45am
	<u>Speed Sessions</u>	11:00am–12:15pm Grand Salon
	<u>Lunch</u>	12:15pm–1:10pm Esplanade Complex
	<u>Afternoon Plenary</u> Creating Jobs: The Role of Social Enterprise in Subsidized Employment Programs	1:15pm–2:15pm Grand Salon
	<u>Concurrent Session VI</u>	2:30pm–3:45pm
	<u>Concurrent Session VII</u>	4:00pm–5:15pm
	<u>Special Tuesday Evening Event</u> B.B. King's Blues Club (Limited attendance–RSVP required)	6:00pm–10:00pm 1104 Decatur St.
Wednesday, July 31	<u>Announcements & Morning Plenary</u> A Roadmap to Reducing Child Poverty	8:15am–9:45am Grand Salon
	<u>Concurrent Session VIII</u>	10:15am–11:30am
	<u>Awards and Closing</u>	11:45pm–12:15pm Grand Salon

PROGRAM AGENDA

Sunday, July 28

12:00pm–1:00pm Board Lunch
Chartres Room

2:00pm–4:00pm Board Meeting
Chartres Room

4:30pm–6:30pm Registration Open
Foyer

5:00pm–7:00pm President's Reception
Royal Garden Terrace

Please join us at the Royal Garden Terrace for a chance to network with other attendees while enjoying some complimentary hors d'oeuvres. Take a moment to get settled in at the Royal Garden Terrace Complex or on the adjoining, outside patio with fellow members.



Monday, July 29

7:30am-1:00pm
Foyer

Registration Open

7:30am-8:00am
Esplanade Complex

Breakfast

Sponsored by the Manhattan Strategy Group



Welcome &
Announcements

8:00am-8:15am
Grand Salon

Kate Probert-Fagundes, Carver County, Minnesota
NAWRS President

Amelia Popham and Victoria Kabak
Office of Planning, Research, and Evaluation, HHS

Morning Plenary

8:15am-9:15am
Grand Salon

Collaboration at the Federal Level: Promoting Father Engagement

Moderator: Hilary C. Bruck, Office of Planning, Research, and Evaluation, HHS

Clarence H. Carter, Director of the Office of Family Assistance and the Acting Director of the Office of Community Services, HHS

Scott M. Lekan, Commissioner of the Office of Child Support Enforcement, HHS

Deborah Bergeron, Director of the Office of Head Start, HHS

Concurrent Sessions I

9:30am-10:45am
East Salon

Evidence-Based Policy-Making

Moderator: John Martinez, MDRC

Evidence in Action: Implementing the Foundations for Evidence-Based Policymaking Act of 2018

Erica Zielewski, Office of Management & Budget

"Pay for Success" Program Models: The Promise and the Perils

John Tambornino, Office of Management & Budget

Using Data to Inform and Enhance Targeted Investments in the Social Sector: Affordable Housing & Workforce

Tracey Stewart, Gary Community Investments/Piton Foundation

Jennifer Newcomer, SHIFT ResearchLab, Piton Foundation

9:30am-10:45am
Center Salon

Racial Equity in Early Childhood: Using Disaggregated Data to Inform State Policies

Moderator: Stephanie Schmit, Center for Law and Social Policy (CLASP)

Ruth Cosse, Center for Law and Social Policy (CLASP)

Karen Schulman, National Women's Law Center (NWLC)

Cemeré James, National Black Child Development Institute (NBCDI)

9:30am-10:45am West Salon	<p>Where Child Support and TANF Intersect: Cooperation, Pass-Through, and Disregard Policies Moderator: Lauren Antelo, Office of the Assistant Secretary for Planning and Evaluation, HHS</p> <p>Understanding Child Support Cooperation Requirements: Key Policy Features and Implementation Challenges Pamela Holcomb, Mathematica</p> <p>Effects of Full Pass-Through on Colorado Families in Need Larry Desbien, Colorado DHS, Division of Child Support Services Candace Cadena, Colorado DHS, Employment and Benefits Division Thomas Zolot, Colorado DHS</p> <p>The Effect of Child Support Disregard on TANF Grant: A Story from Minnesota Dorina Nikolla, Minnesota DHS Ben Jaques-Lesli, Minnesota DHS</p>
9:30am-10:45am St. Louis/Chartres	<p>What Works for Reducing Recidivism, Increasing Employment, and Strengthening Families after Incarceration Moderator: Sean McCoy, PCG</p> <p>Hannah Betesh, Social Policy Research Associates Jennifer Doleac, Texas A&M University Bright Sarfo, MEF Associates</p>
9:30am-10:45am Toulouse/Dauphine	<p>Pathways to Work Evidence Clearinghouse: Distilling Research to Inform Policy and Practice [Facebook Live Session] Moderator: Kimberly Clum, Office of Planning, Research, and Evaluation, HHS</p> <p>Dana Rotz, Mathematica Kate Probert-Fagundes, Carver County, Minnesota Annalisa Mastri, Mathematica Ella Gifford-Hawkins, Larimer County Economic and Workforce Development Department</p>
9:30am-10:45am Orleans Room	<p>Behavioral Innovations in Nutrition Programs Moderator: Jonathan McCay, Mathematica</p> <p><u>Measuring the Impact of Transitioning to an “On Demand” Model for SNAP Recertification Interviews</u> Irene Dominguez, New York City Department of Social Services</p> <p>Using Behavioral Science to Improve Human Service Programs: Lessons from WIC and SNAP Antonia Violante, ideas42 Harrison Neuert, ideas42</p>
9:30am-10:45am Royal Garden Terrace	<p><u>Research Academy</u> – Using Rigorous Research Methods to Inform Decisions: Lessons from the Field Moderator: Angela Rachidi, Mathematica</p> <p>Edith Kealey, NYC Department of Social Services Edward Emmons, Wisconsin Department of Children and Families Javier Espinosa, Rochester Institute of Technology</p>

10:45am-11:00am	Break
Concurrent Sessions II	
11:00am-12:15pm East Salon	<p>Improving the Delivery of Human Service Programs Moderator: Erin Henderlight, PCG</p> <p><u>Using Business Process Analysis to Enhance Human Services Delivery</u> AnnaMaria McCutcheon, Mathematica Katie Bodenlos, Mathematica Tyrone Hampton, Jr., Philadelphia Works</p> <p>Our Child Welfare Capacity Crisis: Why Everything We Think Will Help ... Won't. Bill Bott, Change & Innovation Agency Sean Toole, Change & Innovation Agency</p> <p>Increased Collaboration and Coordination May Mitigate the Effects of Fragmentation and Overlap on Early Care and Education Programs Cheryl Jones, U.S. Government Accountability Office Hedieh Fusfield, U.S. Government Accountability Office</p>
11:00am-12:15pm Center Salon	<p>Starting Out Right: The Importance of Early Childhood and Elementary Education Programs Moderator: Sheena McConnell, Mathematica</p> <p><u>Home and School in the Development of Children</u> Morteza Saharkhiz, IMPAQ International, LLC</p> <p>TANF Funded Afterschool and Summer Programs in Support of the Educational Development of Students from Low-Income Families Mustafa Yilmaz, Kansas Reading Roadmap Kim Trang, Kansas Reading Roadmap</p> <p>Afterschool and Summer Literacy Programs as Child Care Services to Families with Low Socioeconomic Background Mustafa Yilmaz, Kansas Reading Roadmap Andrew Hysell, Hysell-Wagner</p>
11:00am-12:15pm West Salon	<p>Staff Development and Wellness in TANF: Science-Based Strategies to Strengthen Service Delivery Moderator: Ella Gifford-Hawkins, Larimer County Economic and Workforce Development Department</p> <p>Michelle Derr, Mathematica Larry Timmerman, Ramsey County Workforce Solutions</p>

11:00am-12:15pm St. Louis/Chartres	<p>Innovative Strategies to Support Reentry <i>Moderator: Lauren Dunton, Abt Associates</i></p> <p>Evaluation and Initial Findings from Minnesota’s Statewide Initiative to Reduce Recidivism <i>Paul Waldhart, Minnesota DHS</i> <i>Jane Lawrenz, Minnesota DHS</i></p> <p>Crushing Barriers and Stigma: Embedded Probation Services in One Stop Career Centers <i>Kim Tesch-Vaught, PCG</i> <i>Sean McCoy, PCG</i></p> <p>Turning the Tables: Employer Engagement through Reverse Job Fairs <i>Sean McCoy, PCG</i> <i>Kim Tesch-Vaught, PCG</i></p>
11:00am-12:15pm Toulouse/Dauphine	<p><u>Understanding the Data Capacity and Needs of State TANF Agencies</u> <i>Moderator: Robert Goerge, Chapin Hall, University of Chicago</i></p> <p><i>Emily Wiegand, Chapin Hall, University of Chicago</i> <i>Leah Gjertson, Chapin Hall, University of Chicago</i> <i>Adelia Jenkins, Actionable Intelligence for Social Policy (AISP), University of Pennsylvania</i> <i>Melissa Wavelet, MDRC</i></p>
11:00am-12:15pm Orleans Room	<p>Identifying Challenges in Substance Abuse and Mental Health <i>Moderator: Mary Farrell, MEF Associates</i></p> <p><u>An Exploration of the Intersection of Illicit Substance Use and Child Support</u> <i>Lauren Antelo, Office of the Assistant Secretary for Planning and Evaluation, HHS</i></p> <p><u>Mapping the Regional Variation in Foster Care Rates: A Geospatial Benchmark</u> <i>Gilbert Crouse, Office of the Assistant Secretary for Planning and Evaluation, HHS</i></p> <p>Life Cycle: So Much More than Bicycles <i>Antonia Sawyer, Clinical and Translational Science Institute (CTSI)</i> <i>Gabriel Kirk, Otis R Bowen Center</i></p>
11:00am-12:15pm Royal Garden Terrace	<p>Research Academy – Innovative Approaches to Collaborating Around Workforce Data to Improve Job Programs <u>Presentation 1</u> <u>Presentation 2</u> <i>Moderator: Sarah Leopold, Center for Work Education and Employment</i></p> <p><i>Tayyab Walker, New York City Mayor's Office for Economic Opportunity (NYC Opportunity)</i> <i>Kristin Porter, MDRC</i> <i>Jeannine LaPrad, Corporation for a Skilled Workforce</i> <i>David Berman, New York City Mayor's Office for Economic Opportunity (NYC Opportunity)</i></p>
12:15pm-1:10pm Esplanade Complex	<p>Lunch <i>Sponsored by Public Strategies</i></p>



Afternoon Plenary

1:15pm-2:15pm
Grand Salon

Breaking the Cycle of Poverty by Designing Programs for All Family Members

Moderator: Mary Beth Vogel-Ferguson, Social Research Institute, College of Social Work, University of Utah

Tracy Gruber, Senior Advisor of the Intergenerational Poverty Initiative at Utah Department of Workforce Services

Henrietta Muñoz, PhD, Senior Vice President over Research and Evaluation at the United Way of San Antonio & Bexar County

Kate Probert-Fagundes, Division Manager for Public Assistance Programs at Carver County, Minnesota

Concurrent Sessions III

2:30pm-3:45pm
East Salon

Applying Coaching Models in Different Settings

Moderator: Gabrielle Newell, Office of Planning, Research, and Evaluation, HHS

Findings from the Frontlines: Scaling Goal4 It!™ in Colorado Works

Candace Cadena, Colorado DHS, Employment and Benefits Division

Alex Bauer, Mathematica

Katie Grobe, Moffat County Department of Human Services

Janet Wolfson, Summit County Colorado Department of Human Services

Coaching on Wheels: How a TANF Program Took Case Management to Clients

Jonathan McCay, Mathematica

Macia France, La Plata County DHS

Alix Whittaker, La Plata County DHS

2:30pm-3:45pm
Center Salon

Successful Completion of Post-Secondary Education

Moderator: Chantelle Ray, Louisiana Department of Children and Family Services

The Transformational Power of Research: Increasing Community College Completion Rates in Tarrant County and Across the Nation

Ronna Huckaby, Catholic Charities Fort Worth

Early Evaluation Findings from Mississippi Integrated Basic Education and Skills Training (MIBEST)

Christin Durham, Urban Institute

Amanda Briggs, Urban Institute

2:30pm-3:45pm
West Salon

The TANF Data Collaborative

Presentation 1 | Presentation 2 | Presentation 3

Moderator: Nicole Deterding, Office of Planning, Research, and Evaluation, HHS

Alexandra Pennington, MDRC

Adelia Jenkins, Actionable Intelligence for Social Policy (AISP), University of Pennsylvania

Richard Hendra, MDRC

2:30pm-3:45pm St. Louis/Chartres	<p>New Findings from a Career Pathways Evaluation: Implementation and Latest Impacts of the Health Profession Opportunity Grants Program <i>Moderator: Nicole Constance, Administration for Children and Families, HHS</i></p> <p>Implementation of the Health Profession Opportunity Grants (HPOG) Program <i>Robin Koralek, Abt Associates</i></p> <p>Identifying Program Characteristics Associated with Impact Magnitude: Evidence from the Health Profession Opportunity Grants (HPOG) Evaluation <i>Eleanor Harvill, Abt Associates</i></p> <p>New Findings from the Health Profession Opportunity Grants Impacts Study: Impacts Three Years after Random Assignment <i>Dan Litwok, Abt Associates</i></p> <p>What Program Leaders and Staff Learned from Participating in a Career Pathways Impact Study <i>Karen Gardiner, Abt Associates</i></p>
2:30pm-3:45pm Toulouse/Dauphine	<p>Better Together: Benefits of Bringing Academic and Agency Researchers Together to Address Intergenerational Poverty <i>Moderator: John Tambornino, Office of Management & Budget</i></p> <p><i>Tracy Gruber, Utah Department of Workforce Services</i> <i>Mary Beth Vogel-Ferguson, Social Research Institute, College of Social Work, University of Utah</i> <i>Benjamin Gibbs, Brigham Young University</i></p>
2:30pm-3:45pm Orleans Room	<p>Working in the Gig Economy <i>Moderator: Sean McCoy, PCG</i></p> <p>Independent Contractors and Nontraditional Workers: Implications for the Child Support Program <i>Asaph Glosser, MEF Associates</i></p> <p>Understanding the Characteristics and Experiences of Independent Workers: Design Lessons from a Pilot Survey in Washington State <i>Val Benson, MEF Associates</i></p> <p>Understanding the Characteristics and Experiences of Independent Workers: Findings from a Pilot Survey in Washington State <i>Riley Webster, MEF Associates</i></p>
2:30pm-3:45pm Royal Garden Terrace	<p>Research Academy – Creating Meaningful Measures <i>Moderator: Kimberly Clum, Office of Planning, Research, and Evaluation, HHS</i></p> <p>Measuring Progress in Vertical Workforce Development: Toward an Employability Index <i>Brian Holland, BLH Technologies, Inc.</i></p> <p>Assessing Client Progress in TANF: Alternative Measures to WPR <i>Yunny Tai, San Francisco Human Services Agency</i></p> <p>Actionable Steps to Align Federal Performance Indicators across Programs Promoting Self-Sufficiency <i>Elizabeth Brown, Mathematica</i> <i>Pamela Holcomb, Mathematica</i></p>

3:45pm-4:00pm	Break
Concurrent Sessions IV	
4:00pm-5:15pm East Salon	Learning from Employers: How Programs Can Develop More Qualified Job Seekers Moderator: John Martinez, MDRC Michelle Derr, Mathematica Mark Ezzo, Mathematica Patricia Blumenauer, Philadelphia Works, Inc.
4:00pm-5:15pm Center Salon	Career Pathways Curriculum Moderator: Eleanor Harvill, Abt Associates <u>Navigating the Road through Your Career: An Evidence-Based Curriculum for Career Advancement</u> Sara Chaganti, Institute on Assets and Social Policy, Brandeis University Sylvia Stewart, Institute on Assets and Social Policy, Brandeis University Nordia Savage, Health CareRx Academy <u>Mapping Career Pathways: Implications for Data Analysis and Policy</u> Jessica Santos, Brandeis University Misti Jeffers, Brandeis University
4:00pm-5:15pm West Salon	Assessing Solutions to Homelessness as well as the Costs Moderator: Edith Kealey, NYC Department of Social Services Mixed Methods to Explore an Approach for Ending Homelessness Lauren Dunton, Abt Associates Los Angeles County Costs of Homeless Children: Service Use over One Year Jenny Zogg, Los Angeles County Department of Public Social Services
4:00pm-5:15pm St. Louis/Chartres	Food and Nutrition – Special Populations Moderator: Brittany McGill, Insight Policy Research The State of Food Insecurity among Low-Income Veterans Jennifer Pooler, IMPAQ International, LLC <u>Using WIC Participant Characteristics Public Use Data</u> Nicole Kline, Insight Policy Research Betsy Thorn, Insight Policy Research Anna Potter Clifford, USDA Food and Nutrition Service Joi Greene, USDA Food and Nutrition Service The Economic Impacts of Breastfeeding: A Focus on USDA's Special Supplemental Nutrition Program for Women, Infants and Children (WIC) Xinzhe Cheng, USDA, Economic Research Service
4:00pm-5:15pm Toulouse/Dauphine	<u>Behavioral Interventions in TANF and Child Support Services Panel</u> Moderator: Asaph Glosser, MEF Associates Liza Rodler, MEF Associates Bret Barden, MDRC Yana Kusayeva, MDRC

4:00pm-5:15pm
Orleans Room

Research Methods to Ensure Child Safety

Moderator: Dan Litwok, Abt Associates

How to use Big Data to Improve Outcomes

Greg Povolny, Mindshare Technology

Investigating Factors that Lead to Longer Stays in Foster Care

Nick Kolupanowich, University of Maryland, School of Social Work, Ruth H. Young Center

Terry Shaw, University of Maryland, School of Social Work, Ruth H. Young Center

Trial Home Visits as a Protective Factor Limiting Foster Care Recidivism

Terry Shaw, University of Maryland, School of Social Work, Ruth H. Young Center

4:00pm-5:15pm
Royal Garden Terrace

Research Academy – Building and Using Integrated Data Systems (IDS) to Promote Cross-Agency Problem-Solving in Human Services

[Presentation 1](#) | [Presentation 2](#)

Moderator: Adelia Jenkins, Actionable Intelligence for Social Policy (AISP), University of Pennsylvania

Kristina Trastek, Wisconsin Department of Children and Families

Hilary Shager, University of Wisconsin (UW) Institute for Research on Poverty

Jessie Hole, Rhode Island Executive Office of HHS & Freedman HealthCare

Erin Dalton, Allegheny County Department of Human Services

Tuesday, July 30

7:30am-1:00pm
Foyer **Registration Open**

7:30am-8:00am
Esplanade Complex **Breakfast**

Welcome

8:00am-8:15am *James Vidacovich*
Grand Salon Louisiana Department of Children and Family Services

Morning Plenary

8:15am-9:15am **The Critical Role of Executive Skills in Goal Setting and Attainment**
Grand Salon *Moderator: Gabrielle Newell, Office of Planning, Research, and Evaluation, HHS*

Richard Guare, Co-Founder, Executive Skills LLC
Mark Fauth, Founder, TuaPath LLC

Concurrent Sessions V

9:30am-10:45am **Coaching Evaluations**
East Salon *Moderator: Correne Saunders, Abt Associates*

[Linking Evidence to Practice: Implementing and Evaluating Employment Coaching](#)
Michelle Derr, Mathematica
Kelly Davydov, Iowa Department of Human Rights
Shannon Ralph, Jefferson County Colorado DHS

MDRC's MyGoals for Employment Success Evaluation and the TuaPath Platform
Donna Wharton-Fields, MDRC

9:30am-10:45am **Serving Disconnected & Opportunity Youth**
Center Salon *Moderator: Erica Zielewski, Office of Management & Budget*

[Creating Opportunities for Disconnected Youth](#)
David Blount, Urban Institute
Natalie Spievack, Urban Institute
Nathan Sick, Urban Institute
Alan Dodkowitz, Urban Institute

[Serving Opportunity Youth through Innovative Collaborations in Government](#)
Pascale Mevs, New York City Mayor's Office for Economic Opportunity
Liam Ristow, Westat
Danielle Cummings, MDRC

9:30am-10:45am West Salon	<p>Trauma-Informed Services Moderator: Andrea Hetling, Rutgers University</p> <p><u>Becoming a Trauma-Informed State: One Step at a Time!</u> Mary Beth Vogel-Ferguson, Social Research Institute, College of Social Work, University of Utah</p> <p>Understanding Juvenile Reentry: An Evaluation of Youth Service Needs and Utilization Christina Sogar, University of Nebraska at Kearney Jody VanLaningham, University of Nebraska at Kearney Julie Campbell, University of Nebraska at Kearney Suzanne Maughan, University of Nebraska at Kearney</p> <p><u>A Better Future for Children: Family Focused Child Support-Child Welfare Services</u> Diane Potts, Center for the Support of Families, a Division of SLI Government Solutions</p>
9:30am-10:45am St. Louis/Chartres	<p>Supporting Employment & Career Advancement through Specific Industries Moderator: Karen Gardiner, Abt Associates</p> <p><u>Coping with Work Instability in Minnesota</u> Amelia Coffey, Urban Institute Deborah Schlick, Minnesota DHS</p> <p>Building Prosperity Ecosystems: Shifting Mindsets to Become Entrepreneurs! Makaya McKnight, PCG Kim Tesch-Vaught, PCG Sean McCoy, PCG</p> <p>Apprenticeships for Low-income Populations in Washington Erin Frasier, Washington State Board for Community & Technical Colleges Shana Peschek, Washington State Construction Center of Excellence Louisa Erickson, Washington State Department of Social & Health Services</p>
9:30am-10:45am Toulouse/Dauphine	<p><u>A Collaborative Process to Improve Efforts to Outcomes: Lessons Learned from PROMISE Projects</u> Moderator: John Tambornino, Office of Management & Budget</p> <p>Jade Gingerich, Maryland Department of Disabilities Kelli Crane, Center for Transition and Career Innovation, University of Maryland Ellie Hartman, University of Wisconsin, Stout Rebekah Selekman, Mathematica</p>
9:30am-10:45am Orleans Room	<p><u>The Savings Initiative Pilot: A New Way to Increase Financial Resilience by Social Connection/Capital and Nontraditional Savings for TANF Parents</u> Moderator: Mary Farrell, MEF Associates</p> <p>Alicia Atkinson, The Prosperity Agenda William Vesneski, University of Washington Nate Mazzuca, Career Path Services</p>

9:30am-10:45am
Royal Garden Terrace

Research Academy – Leveraging Administrative Data to Meet Program Needs

Moderator: Valerie Benson, MEF Associates

Birth Match: Timely Use of Child Welfare Administrative Data to Protect Newborns

Terry Shaw, University of Maryland, School of Social Work, Ruth H. Young Center

Using Administrative Data to Target Social Worker Outreach for Homeless Families at Risk for Child Maltreatment

Angela Ghesquiere, NYC Department of Social Services, Office of Evaluation of Research

Edith Kealey, NYC Department of Social Services

Leveraging Administrative Data to Study Characteristics and Outcomes of HUD Tenants

Carol Leming, U.S. Department of Housing and Urban Development

10:45am-11:00am

Break

Sponsored by Insight Policy Research



Concurrent Sessions VI

11:00am-12:15pm
Grand Salon

Speed Sessions (Pick three to attend, one every 25 minutes)

Moderator: Jamie Haskel, University of Maryland, School of Social Work, Ruth H. Young Center

Table 1: TANF Collaborations: Strategies to Empower People (STEP)

James Vidacovich, Louisiana Department of Children and Family Services

Table 2: Building Coaching Capacity in TANF Programs

Ella Gifford-Hawkins, Larimer County Economic and Workforce Development Department

Mark Fauth, TuaPath, LLC

Table 3: Why You Should Stop Using the Word “Welfare”

Tazra Mitchell, Center on Budget and Policy Priorities

Table 4: Application of Work Requirements across Human Service Programs

Gretchen Rowe, Mathematica

Table 5: Incorporating Two-Generation Approaches into Community Change

Amelia Coffey, Urban Institute

Henrietta Muñoz, United Way of San Antonio and Bexar County

Table 6: States' Efforts to Support Children Affected by Trauma

Elizabeth Morrison, U.S. Government Accountability Office

Table 7: Leveraging Rural Strengths and Assets: Approaches Used by Tribal Career Pathways Programs

Michael Meit, NORC at the University of Chicago

Table 8: Pathways Toward Prosperity and Well-Being: A Bold New Approach to Reduce Poverty and Create Healthy, Thriving Lives

Henriët Hendriks, Future Services Institute, Humphrey School of Public Affairs

Leigh Durbahn, Olmsted County Government

Table 9: Integrated Social Services: Gathering Evidence of What Works and Why

Annalisa Mastri, Mathematica
Tyrone Hampton, Jr., Philadelphia Works
Stephen Bell, Westat

Table 10: Collaboration by Design

Nancy McCrohan, Public Policy Associates Inc.
Amanda Ramsey, Kansas Department of Commerce

Table 11: Research and Practice Collaboration: Seeking Innovative Employment Service Strategies

Dan Bloom, MDRC
Karin Martinson, Abt Associates
Sheena McConnell, Mathematica

Table 12: [Enhancing Workforce and Early Childhood Education Participation through Collaborative Provision of Diapers](#)

Lynn Comer, National Diaper Bank Network
Janet Stolfi Alfano, The Diaper Bank of Connecticut

Table 13: [Testing a New Approach to Serving Noncustodial Parents Behind in Their Child Support Payments: Findings from the Child Support Noncustodial Parent Employment Demonstration \(CSPED\)](#)

Leslie Hodges, Institute for Research on Poverty

11:00am-12:15pm
Royal Garden Terrace

[Research Academy](#) – Demonstration of a New Approach to Tools and Training Using a TANF Dashboard as an Example

Moderator: Melissa Wavelet, MDRC
Julia Lane, New York University

12:15pm-1:10pm
Esplanade Complex

Lunch

Afternoon Plenary

1:15pm-2:15pm
Grand Salon

[Creating Jobs: The Role of Social Enterprise in Subsidized Employment Programs](#)

Moderator: Mike Fishman, MEF Associates

Dan Bloom, MDRC
Nan Maxwell, Mathematica
Gregg Keesling, RecycleForce

Concurrent Sessions VII

2:30pm-3:45pm
East Salon

[Holistic, Collaborative Workforce Development Programming for Public Housing Residents: Learning from Jobs-Plus](#)

Moderator: Kim Tesch-Vaught, PCG
Daniel Edelman, NYC Mayor's Office for Economic Opportunity
Josh Leopold, Urban Institute
Nandita Verma, MDRC

2:30pm-3:45pm Center Salon	<p>Supporting Parents through Child Care Moderator: JoAnne Hughes, Louisiana Department of Children and Family Services</p> <p><u>Understanding How States Support Parents in Education and Training Programs through the Child Care and Development Fund</u> Kelly Dwyer, Urban Institute</p> <p>Opportunity Quest: A Collaborative Approach for Addressing the Employment Barriers Faced by Low Income, Low Skilled Parents Carolyn Corea, IMPAQ International, LLC Neha Nanda, IMPAQ International, LLC</p> <p><u>Bridging the Gap: How Local Workforce Development Boards Can Help Address Child Care Barriers</u> Semhar Gebrekristos, Urban Institute</p>
2:30pm-3:45pm West Salon	<p><u>Disaster SNAP: Lessons Learned and Best Practices in Louisiana</u> Moderator: Erin Henderlight, PCG</p> <p>Allison Rigby, Louisiana Department of Children and Family Services</p>
2:30pm-3:45pm St. Louis/Chartres	<p><u>Pathways out of Poverty: Data-Informed Solutions for Austin/Travis County</u> Moderator: Amelia Popham, Office of Planning, Research, and Evaluation, HHS</p> <p>Heath Prince, Ray Marshall Center for the Study of Human Resources, LBJ School of Public Affairs, University of Texas at Austin Greg Cumpston, Ray Marshall Center for the Study of Human Resources, LBJ School of Public Affairs, University of Texas at Austin Leah Meunier, Workforce Solutions Capital Area Lawrence Lyman, Travis County Health and Human Services Department</p>
2:30pm-3:45pm Toulouse/Dauphine	<p>Paid Leave to Support Individuals and Families Moderator: Dana Rotz, Mathematica</p> <p><u>Disability Perspectives: An Analysis of Leave Taking among Workers Affected by Disabilities</u> Suma Setty, National Center for Children in Poverty, Columbia University Seth Hartig, National Center for Children in Poverty, Columbia University</p> <p><u>Paid Family Leave: Supporting Work and Family Stability among Lower Income Mothers</u> Pamela Winston, Office of the Assistant Secretary for Planning and Evaluation, HHS</p>
2:30pm-3:45pm Orleans Room	<p>Job Search and Workforce Assistance for TANF Moderator: Lauren Deutsch, Office of Planning, Research, and Evaluation, HHS</p> <p><u>Integrating WIOA Expertise into TANF and SNAP</u> Marcy Kasner, Larimer County Economic and Workforce Development Mark Fauth, TuaPath, LLC</p> <p>The Impact of Different Job Search Approaches for TANF Recipients on Employment Eleanor Harvill, Abt Associates</p> <p>Successful Partnerships Create a Pathway to the Middle Class for TANF Recipients Karen Armstrong, IMPAQ International, LLC Jessica Smith, IMPAQ International, LLC</p>

2:30pm-3:45pm Royal Garden Terrace	<u>Research Academy – Using Human-Centered Design to Strengthen Collaborative, Participatory Research, and Program Innovation</u> Moderator: Yana Kusayeva, MDRC Jonathan McCay, Mathematica Michelle Derr, Mathematica Annalisa Mastri, Mathematica
3:45pm-4:00pm	Break
Concurrent Sessions VIII	
4:00pm-5:15pm East Salon	NYC’s Service Design Studio: A Resident-First Approach to Public Service Moderator: Tomiko Breston, Louisiana Department of Children and Family Services Caroline Bauer, NYC Mayor's Office for Economic Opportunity Kailey Burger, NYC Administration for Children's Services Markus Kessler, NYC Administration for Children's Services Stephen Whitlow, Abt Associates
4:00pm-5:15pm Center Salon	Income Stability and Alleviating Poverty Moderator: Pamela Winston, Office of the Assistant Secretary for Planning and Evaluation, HHS <u>Assessing a Package of Policies to Reduce Child Poverty in the U.S.</u> Sarah Minton, Urban Institute <u>Can Minimum Wage Increases Lead to Benefit Cliffs? Comparing Assumptions to Reality</u> Seth Hartig, National Center of Children in Poverty, Columbia University <u>Stable Source of Income: Investigating the Variance of TANF Grants in Minnesota</u> Ben Jaques-Leslie, Minnesota DHS
4:00pm-5:15pm West Salon	Addressing Barriers to Women's Entry into High-Growth Industries: A Behavioral Intervention Approach Moderator: Yana Kusayeva, MDRC Neha Nanda, IMPAQ International, LLC Carolyn Corea, IMPAQ International, LLC Paula Mian, IMPAQ International, LLC
4:00pm-5:15pm St. Louis/Chartres	Transitions to Adulthood from Foster Care: Education, Employment and Housing Moderator: Edith Kealey, NYC Department of Social Services Michael Pergamit, Urban Institute Devlin Hanson, Urban Institute Jiffy Lansing, Northwestern University Alexandra Stanczyk, Urban Institute

4:00pm-5:15pm Toulouse/Dauphine	<p>Deeper Dive into TANF Populations Moderator: Mark Fauth, TuaPath, LLC</p> <p><u>TANF Child-Only Cases: What Are Their Needs and How Can We Serve Them?</u> Kristen Joyce, Mathematica</p> <p><u>Fostering Collaboration with TANF Leavers' Survey Results</u> Candace Cadena, Colorado DHS, Employment and Benefits Division Rebecca Eaton, Eaton Synergies, LLC Shelley Osborn, ICF Sarah Leopold, Center for Work Education and Employment</p>
4:00pm-5:15pm Orleans Room	<p>SNAP E&T Partnerships Moderator: Tony Ong, PCG</p> <p>Characteristics of SNAP E&T Participants and Programs Gretchen Rowe, Mathematica</p> <p><u>Partnering to Provide Services to SNAP Employment and Training Program Participants</u> Kristen Jones, U.S. Government Accountability Office</p> <p><u>SNAP E&T Partnership in Louisiana</u> Allison Rigsby, Louisiana Department of Children and Family Services Dennis Bagneris, Liberty's Kitchens</p>
4:00pm-5:15pm Royal Garden Terrace	<p>Research Academy – <u>Methods and Considerations in Describing TANF Caseloads from the Family Self-Sufficiency Data Center</u> Moderator: Hilary Bruck, Office of Planning, Research, and Evaluation, HHS</p> <p>Emily Wiegand, Chapin Hall, University of Chicago Robert Goerge, Chapin Hall, University of Chicago Leah Gjertson, Chapin Hall, University of Chicago</p>
Networking Reception at B.B. King's Blues Club (1104 Decatur Street, about 0.5 miles from the hotel)	
6:00pm-10:00pm	<p>See Details on Page 9 Event is limited to the first 100 guests who RSVP Dinner and drinks provided Please plan to arrive no later than 6:15pm</p>



Wednesday, July 31

7:30am-10:30am
Foyer

Registration Open

7:30am-8:15am
Esplanade Complex

Breakfast

Announcements

8:15am-8:30am
Grand Salon

Kate Probert-Fagundes, Carver County, Minnesota
NAWRS President

Morning Plenary

8:30am-9:45am
Grand Salon

A Roadmap to Reducing Child Poverty
Moderator: Edith Kealey, NYC Department of Social Services

Benard P. Dreyer, Professor of Pediatrics, New York University
Christine James-Brown, President & CEO, Child Welfare League of America

9:45am-10:15am

Break for Hotel Checkout

Concurrent Sessions IX

10:15am-11:30am
East Salon

USVI TANF: Family and Staff Needs, Program Challenges, and Opportunities after Disruptions
Moderator: Alisha Smith, Louisiana Department of Children and Family Services

Noreen Michael, University of the Virgin Islands
Deborah Brown, University of the Virgin Islands
E. Aracelis Francis, University of the Virgin Islands

10:15am-11:30am
Center Salon

State Experiences Measuring Caseload Dynamics and Earnings Outcomes for TANF Participants
Moderator: Mark Fauth, TuaPath, LLC

Leah Gjertson, Chapin Hall, University of Chicago
Kristen Boelcke-Stennes, Minnesota DHS
Letitia Passarella, University of Maryland, School of Social Work, Ruth H. Young Center
Jeff Prince, Virginia Department of Social Services
Akhtar Khan, California Department of Social Services

10:15am-11:30am
West Salon

Building a Positive Organizational Culture in TANF Programs
Moderator: Amelia Popham, Office of Planning, Research, and Evaluation, HHS

Asaph Glosser, MEF Associates
Sook Jin Ong, Future Services Institute
Kimberly Petersen, Santa Cruz County Human Services

10:15am-11:30am St. Louis/Chartres	<u>Family Perspectives on Marginal Tax Rates, Safety Net Benefits, and Employment</u> Moderator: Riley Webster, MEF Associates Rachel Gaddes, Insight Policy Research Brittany McGill, Insight Policy Research Rachel Holzwart, Insight Policy Research Pamela Winston, Office of the Assistant Secretary for Planning and Evaluation, HHS
10:15am-11:30am Toulouse/Dauphine	Improving Administrative Data for Research and Program Implementation Moderator: Yana Kusayeva, MDRC What Does It Mean to Be Asian American? Definitions of Asian Americans in Research on Poverty Victoria Tran, Urban Institute Frontline Workers and the Creation of Administrative Data for Social Policy Evaluation Correne Saunders, Abt Associates Andrea Hetling, Rutgers University-New Brunswick
10:15am-11:30am Orleans Room	New Approaches to Addressing Poverty Moderator: Jonathan McCay, Mathematica <u>Using Brain Science to Develop New Pathways Out of Poverty</u> Ruthie Liberman, EMPATH Economic Mobility Pathways Agnes Venson, Office of Work Opportunity, Washington D.C. DHS Transforming Impossible into Possible (TIP) Intervention as an Innovative Community-Based Collaborative Model Philip Young Hong, Loyola University Chicago Dara Lewis, Loyola University Chicago Rana Hong, Loyola University Chicago
10:15am-11:30am Royal Garden Terrace	<u>Findings from the New Economy and Child Care Project</u> Moderator: RuNiaja Vicksbrown, Louisiana Department of Children and Family Services Angela Rachidi, Mathematica Kerry Dejardins, APHSA Julius Chaidez, APHSA
11:45pm-12:15pm Grand Salon	Awards and Closing
1:00pm-2:00pm Chartres Room	NAWRS Board Luncheon
3:00pm-9:00pm Chartres Room	NAWRS Board Meeting

Have a safe trip home!

57 NAWRS WORKSHOPS

Year, President, Home State, Site

1956 Sam Carter, LA, Chicago	1990 Monica Zazworsky, WA, Bellevue
1958 Sam Carter, LA, Chicago	1991 Samba Sanyang, SC, Charleston
1960 Sam Carter, LA, Denver	1992 Florence C. Odita, OH, Columbus
1962 Gidson A. Hample, ND, Washington D.C.	1993 Aldona Vaitkus, AZ, Scottsdale
1964 Editha M. Ponder, Washington D.C.	1994 Jane A. Goynes (Harrison), TX, Austin
1966 Edson K. Labrack, ME, Washington D.C.	1995 Bruce Twine/Joe Golden, Jackson Hole
1967 W.L. Parker, CA, San Francisco	1996 Werner Schink, CA, San Francisco
1968 Elmoine Kirkham, UT, Washington D.C.	1997 Sandra L. Brown, GA, Atlanta
1969 George Richards, CA, New Orleans	1998 Peggie Powers, IL, Chicago
1970 Raymond Freeman, CO, Washington D.C.	1999 Diane Redmond, OH, Cleveland
1971 Robert R. Cline, WV, Las Vegas	2000 Aldona Viatkus, AZ, Scottsdale
1972 Alan Leggett, TX, Washington D.C.	2001 Richard Larson, MD, Baltimore
1973 Wayne Epperson, IL, Denver	2002 Jeffrey Repichowski, NM, Albuquerque
1974 Edward C. Pirie, VT, Boston	2003 Leslie Raderman, CA, San Diego
1975 Ira Gunn, NV, San Francisco	2004 Kenneth Kickham, OK, Oklahoma City
1976 George Richards, CA, New Orleans	2005 Philip Klein, WI, Madison
1977 Wallace P. Earle, AZ, Phoenix	2006 Coleen Collins, WY, Jackson Hole
1978 Charles N. Wagner, GA, Savannah	2007 Richard Brennan, WV, Charleston
1979 Richard Wheelock, UT, Salt Lake City	2008 Kerry Mullins, TN, Nashville
1980 Joseph Gale, WI, Madison	2009 George Falco & David Dlugolecki, NY, Albany
1981 Gary McDonald, TN, Nashville	2010 Michael Bono, CA, Los Angeles
1982 Tom Suehs, TX, San Antonio	2011 Mary Roberto, CO, Vail
1983 Alma Cox, MS, Jackson	2012 Vince Kilduff, MD, Baltimore
1984 Patricia Day, CT, Hartford	2013 Vince Kilduff, MD, Chicago
1985 Jerry Bahr, NE, Lincoln	2014 Michael Bono, CA, Providence
1986 Susan P. Polyson, VA, Richmond	2015 Michael Bono, CA, Atlanta
1987 L. Marjorie Barker, KY, Louisville	2017 Kinsey Dinan, NYC, Pittsburgh
1988 J. Barry Schaub, MD, Baltimore	2019 Kate Probert-Fagundes, MN, New Orleans
1989 Dave Thorsen, MT, Kalispell	

THANK YOU TO THE 2019 SPONSORS



