



REENGAGING NEW YORK CITY'S DISCONNECTED YOUTH THROUGH WORK

Implementation and Early Impacts of the Young Adult Internship Program

National Association for Welfare Research Statistics Workshop

July 31, 2017

Melanie Skemer





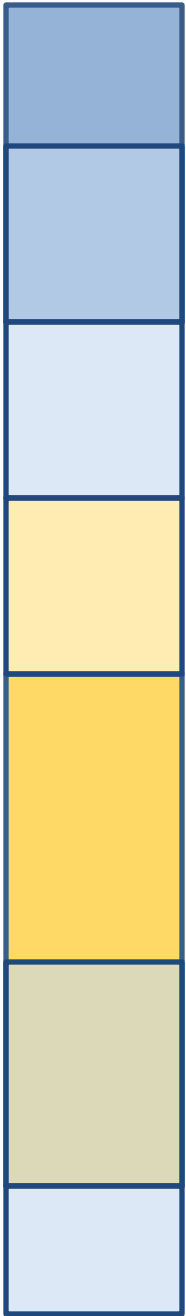
Disconnected youth face serious challenges to achieving labor market success and self-sufficiency

A Number of Challenges

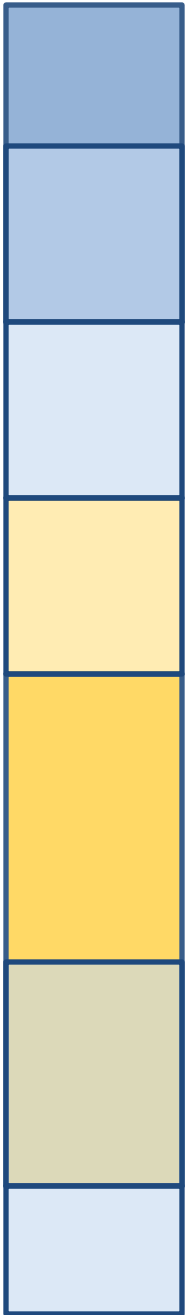
- Difficulties in school
- Lack of work skills and experience
- Poverty
- Low social capital

Poor Adult Outcomes

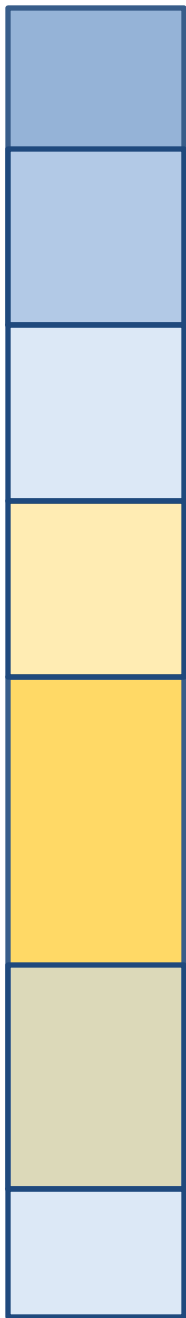
- Low educational attainment
- Lack of stable, well-paid employment
- Dependence on public assistance
- Poor health



- Disconnection caused by diverse circumstances, so program models vary
- Many programs have been evaluated, several have had some positive effects



- Overseen by the NYC Department of Youth and Community Development (DYCD) and NYC Mayor's Office for Economic Opportunity
- Delivered by various community-based organizations across the city
- YAIP is unlike most tested models
 - Targets job-ready subset of disconnected youth
 - Simple
 - Large scale operation



25 hours
per week,
paid

1+ contacts
per month,
unpaid

Phase 1

- 2-4-week orientation/job readiness training

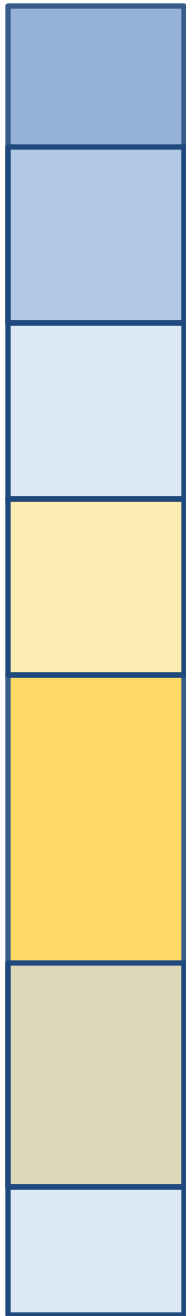
Phase 2

- 10-12-week internship + educational workshops

Phase 3

- 9-month case management follow-up

Program goal: Job, postsecondary enrollment, advanced training, or military enlistment



Sample

- July 2013, November 2013, March 2014 cohorts in 13 YAIP locations across NYC

Components

- Implementation study
- Impact study
- Benefit-cost study

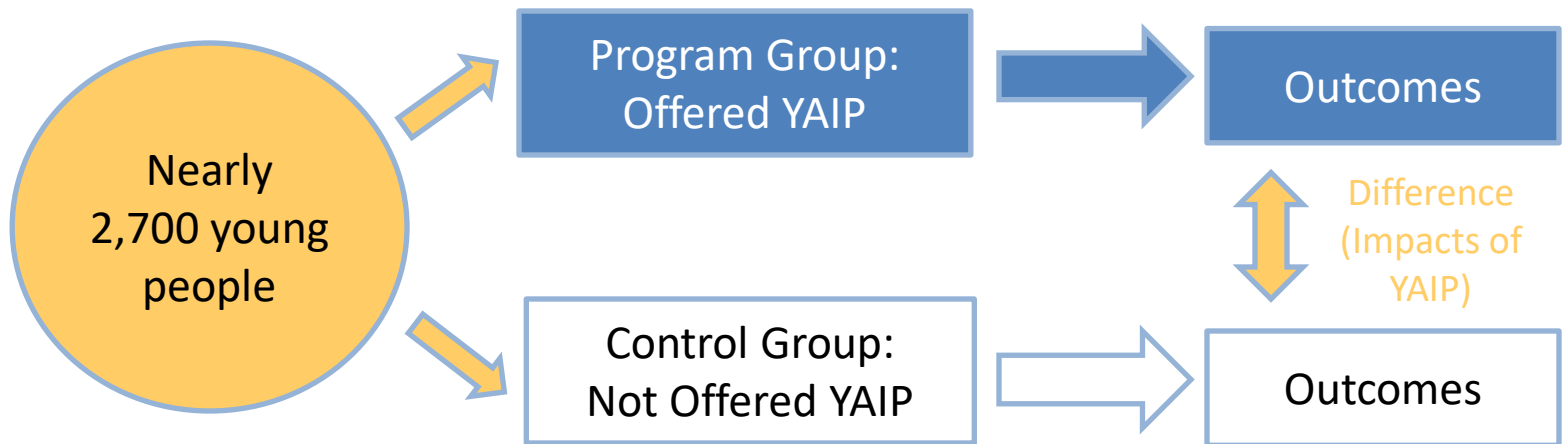
Funder

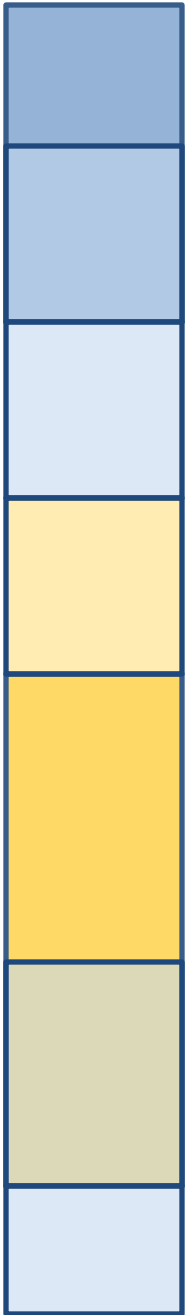
- Administration for Children and Families in the U.S. Department of Health and Human Services

Researchers

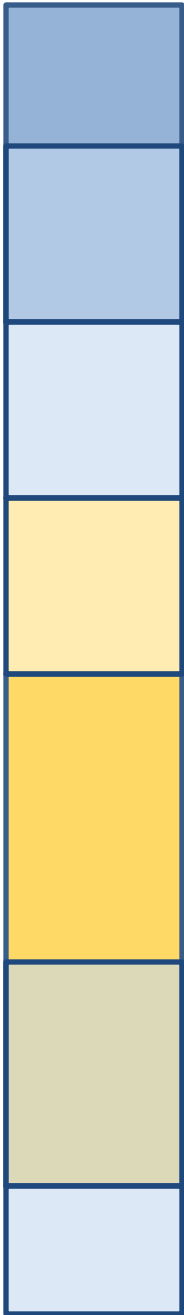
- MDRC
- MEF Associates
- Branch Associates
- Decision Information Resources

- Individual random assignment
- 60% program group, 40% control group





- How does the program operate? What challenges did providers experience in implementing the program?
- What are young people's participation rates in internships and supportive services?
- Does the implementation of the program vary by provider?



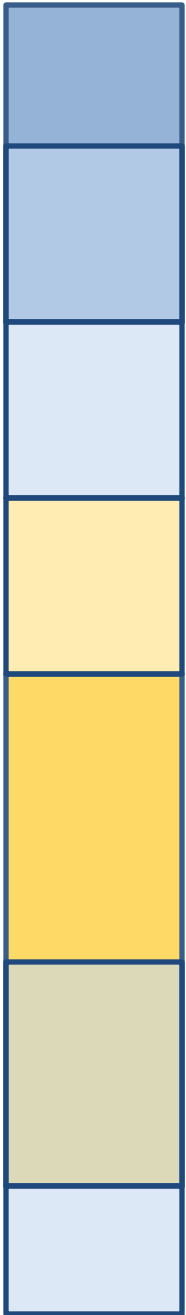
Baseline data from study enrollment

Interviews with staff and participants

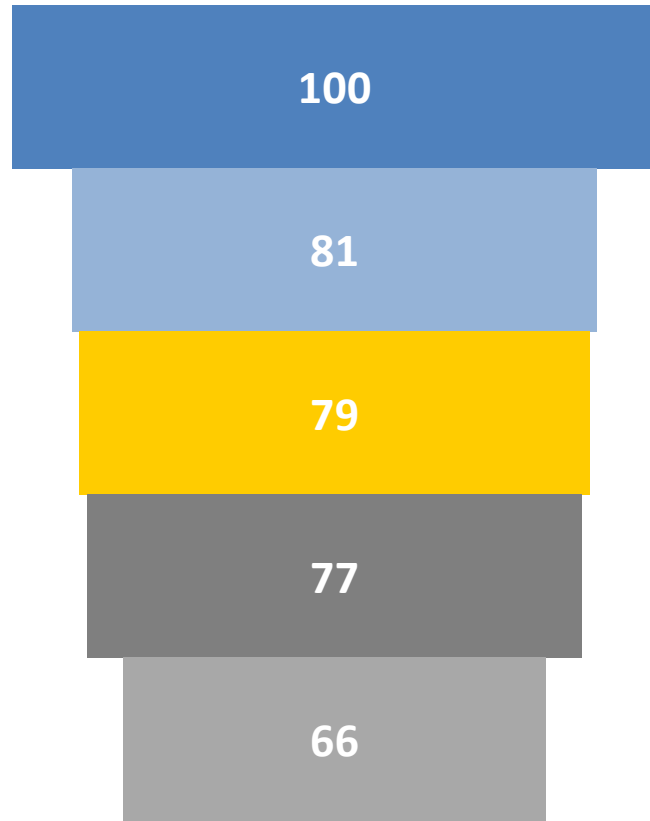
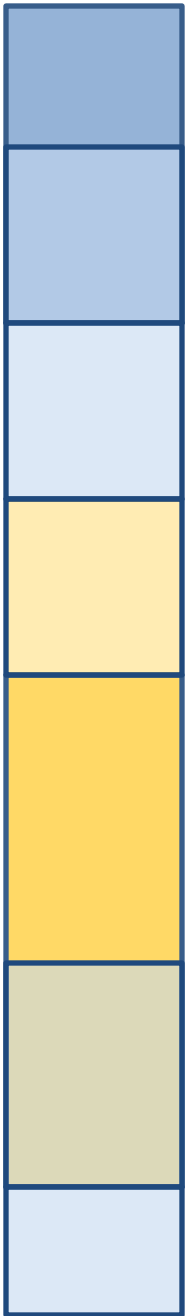
Worksite observations

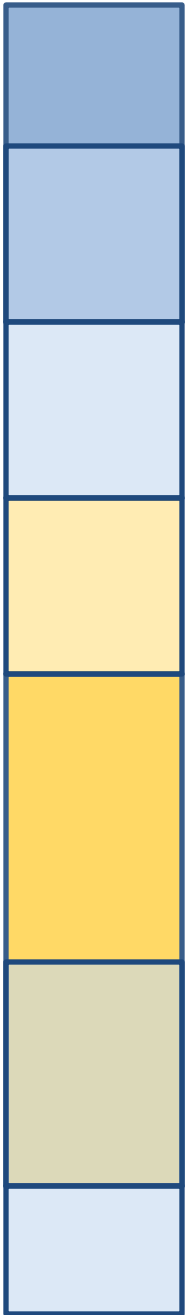
Program participation data from YAIP MIS

Participant, staff, and worksite supervisor questionnaires

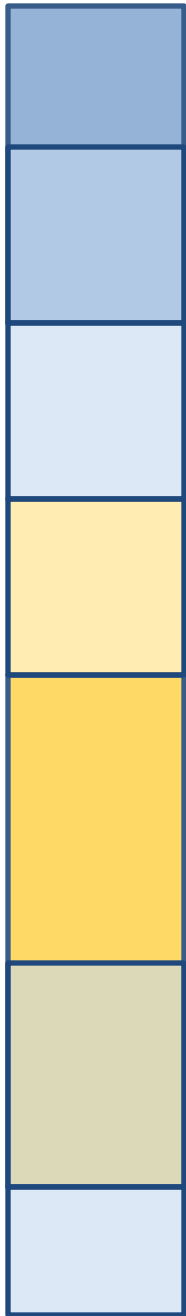


- Multistage screening and intake process appears to have allowed providers to identify their target population of more job-ready disconnected youth
- Providers delivered YAIP consistently and adhered very closely to the model as designed
- Participation rates were high





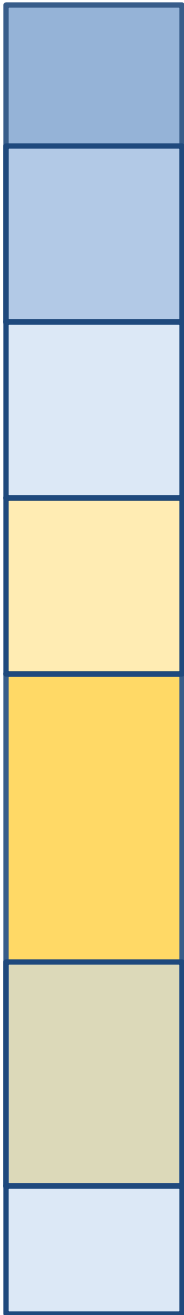
- What is the difference in services received by program group members versus control group members?
- Do program group members demonstrate better outcomes than control group members in key domains?
- Do differences in outcomes vary for certain subgroups?



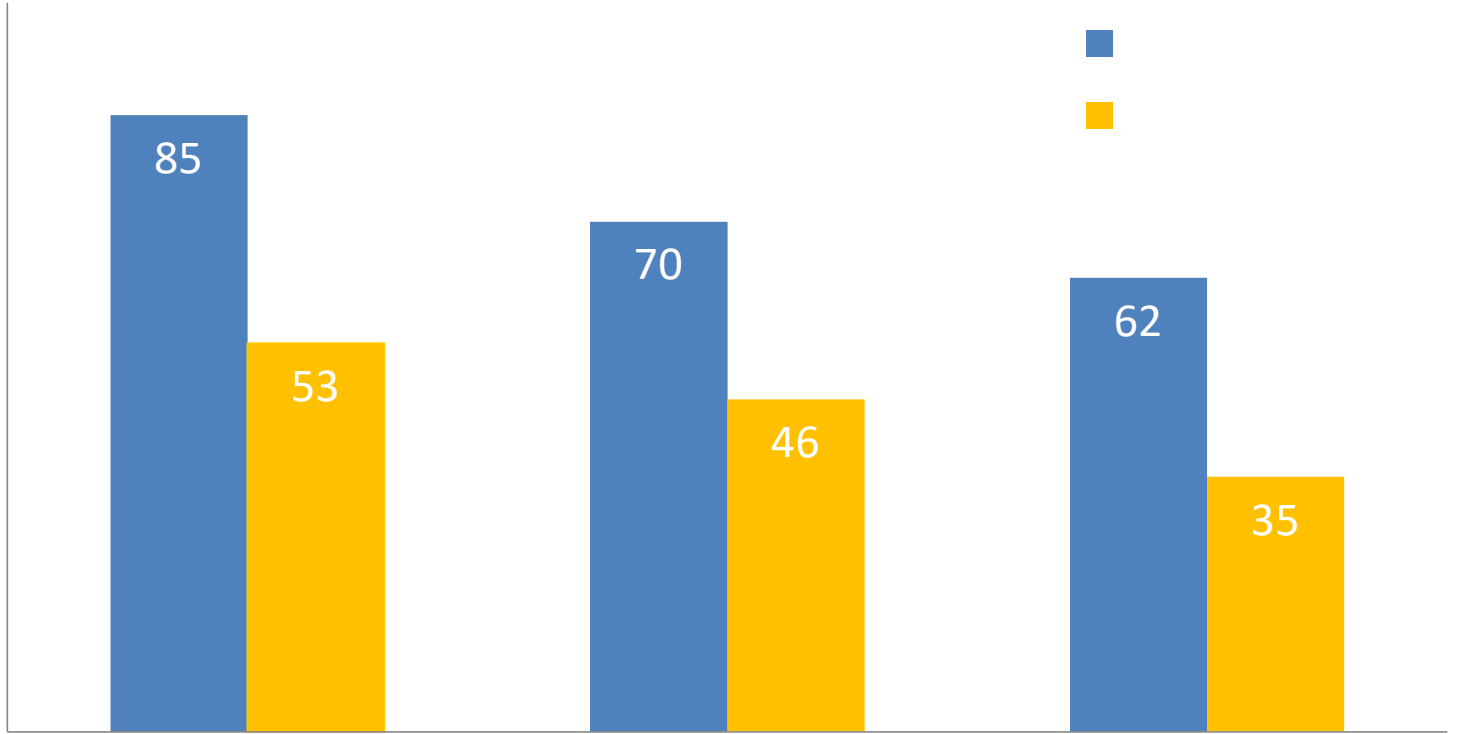
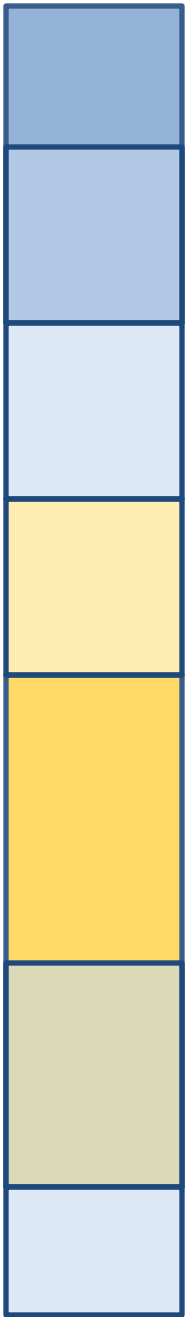
One-year survey data:
measures service
receipt and outcomes
in several domains

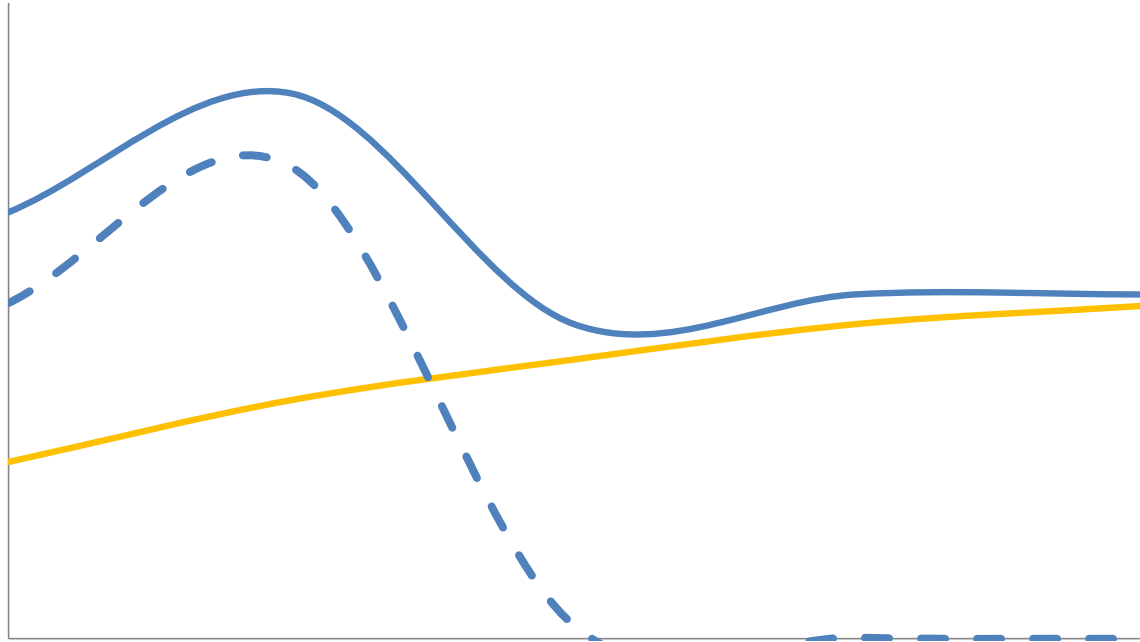
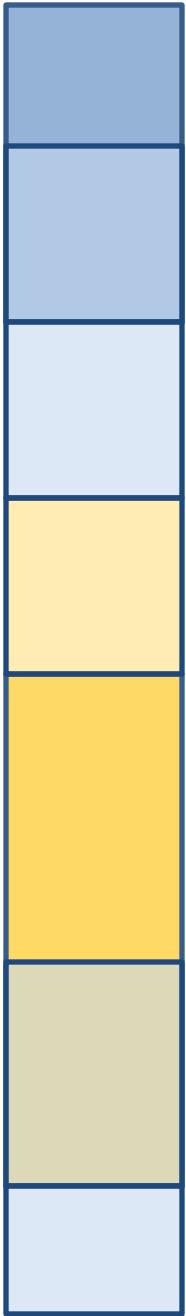
National Directory of
New Hires data
(employment and
earnings)

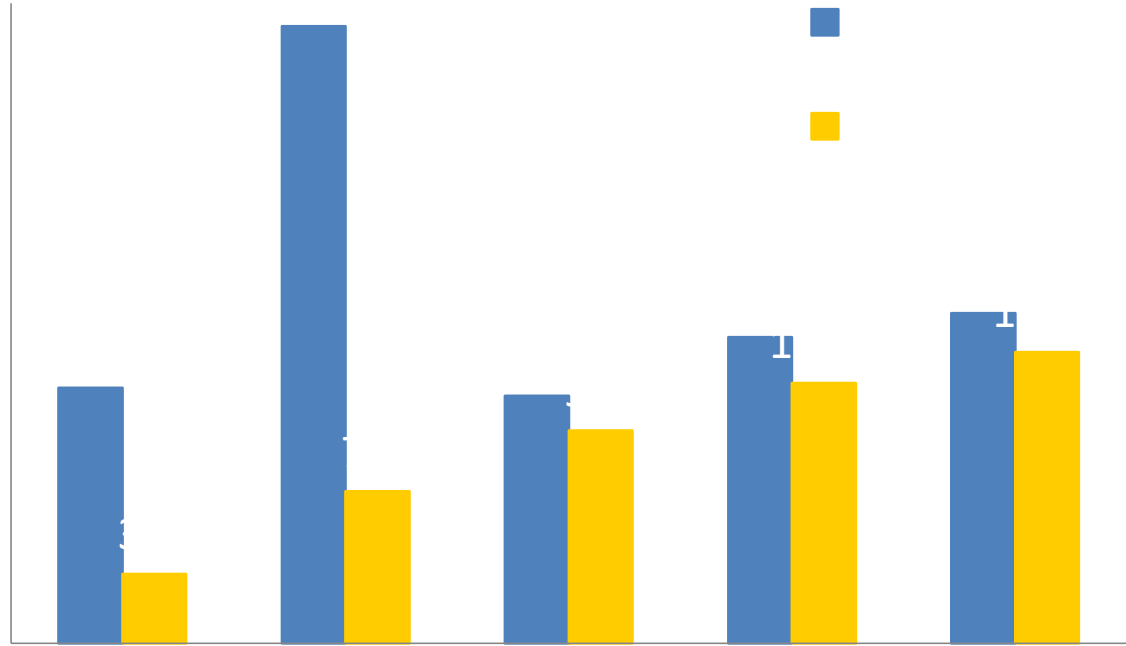
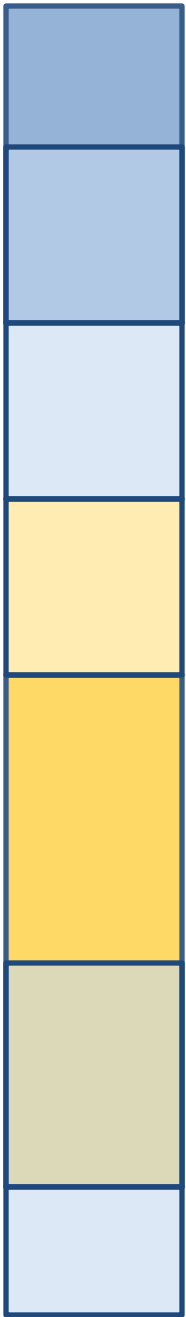
National Student
Clearinghouse data
(postsecondary school
enrollment)

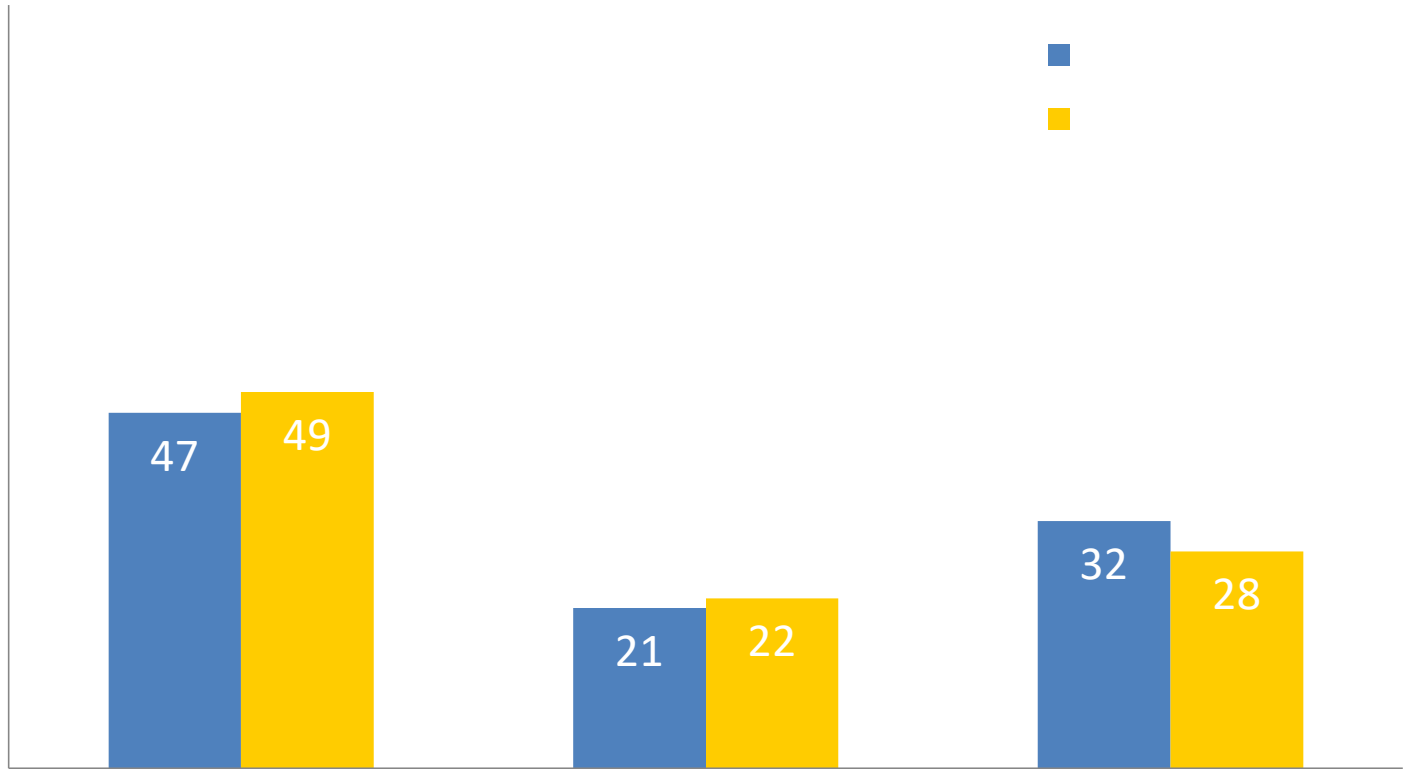
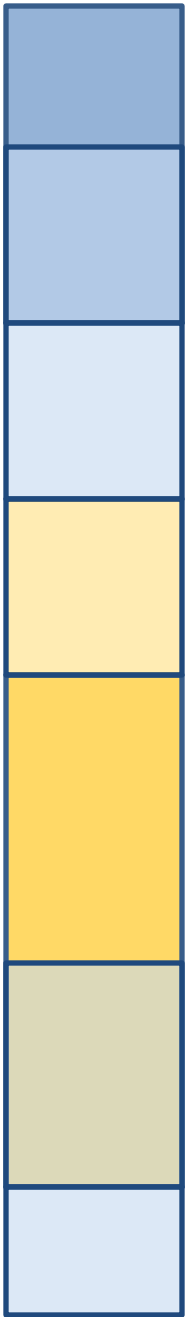


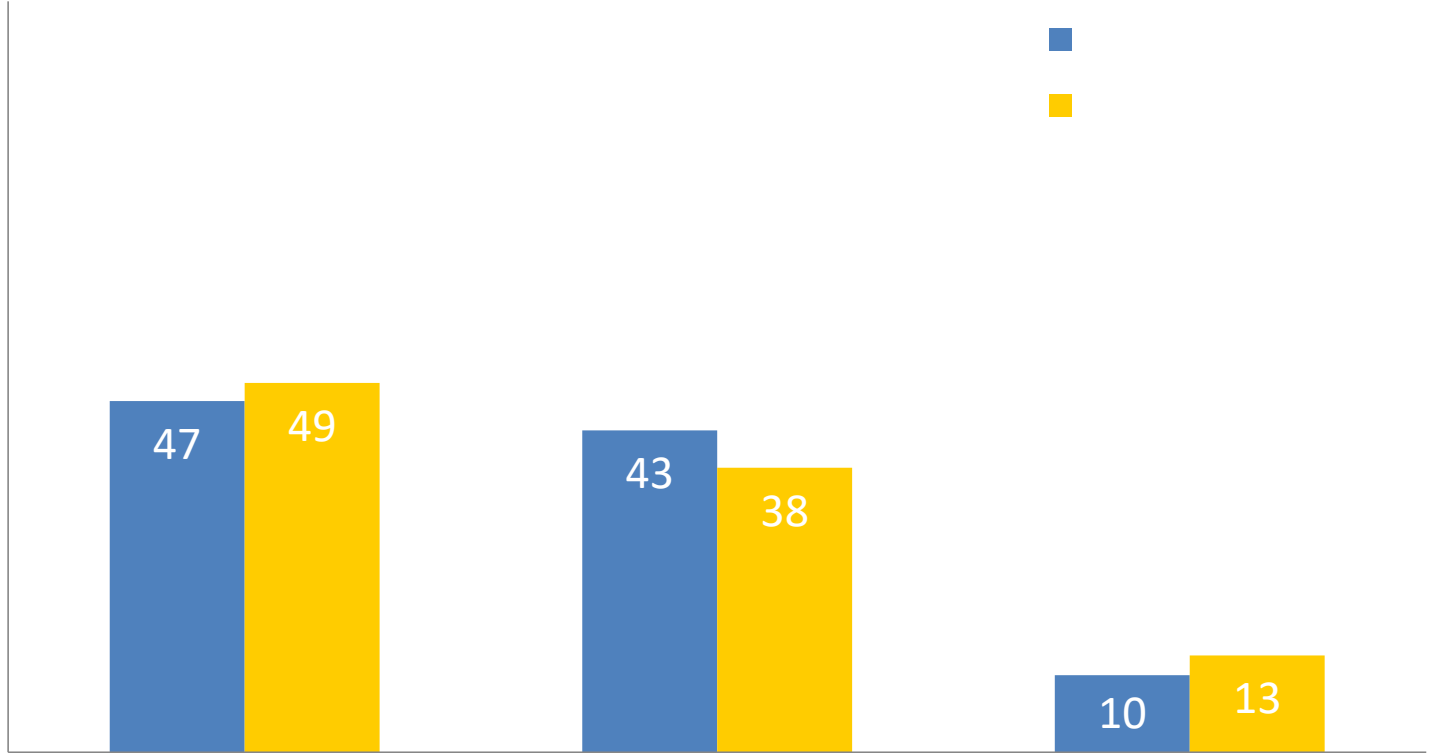
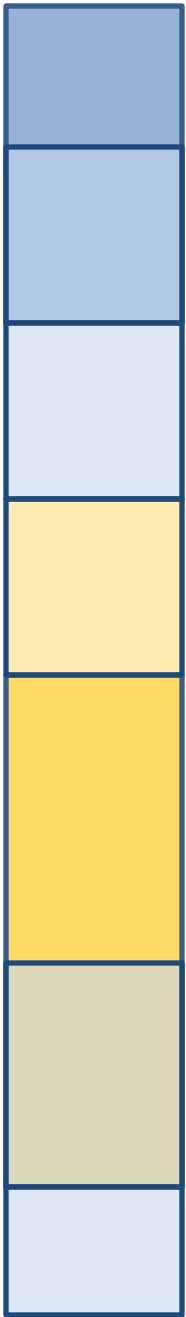
- Impacts measured one year after random assignment
- Measured impacts in six key domains using one-year survey and administrative data
 - Service receipt
 - Employment and earnings
 - Education and training
 - Psychosocial outcomes
 - Economic and personal well-being
 - Criminal justice system involvement

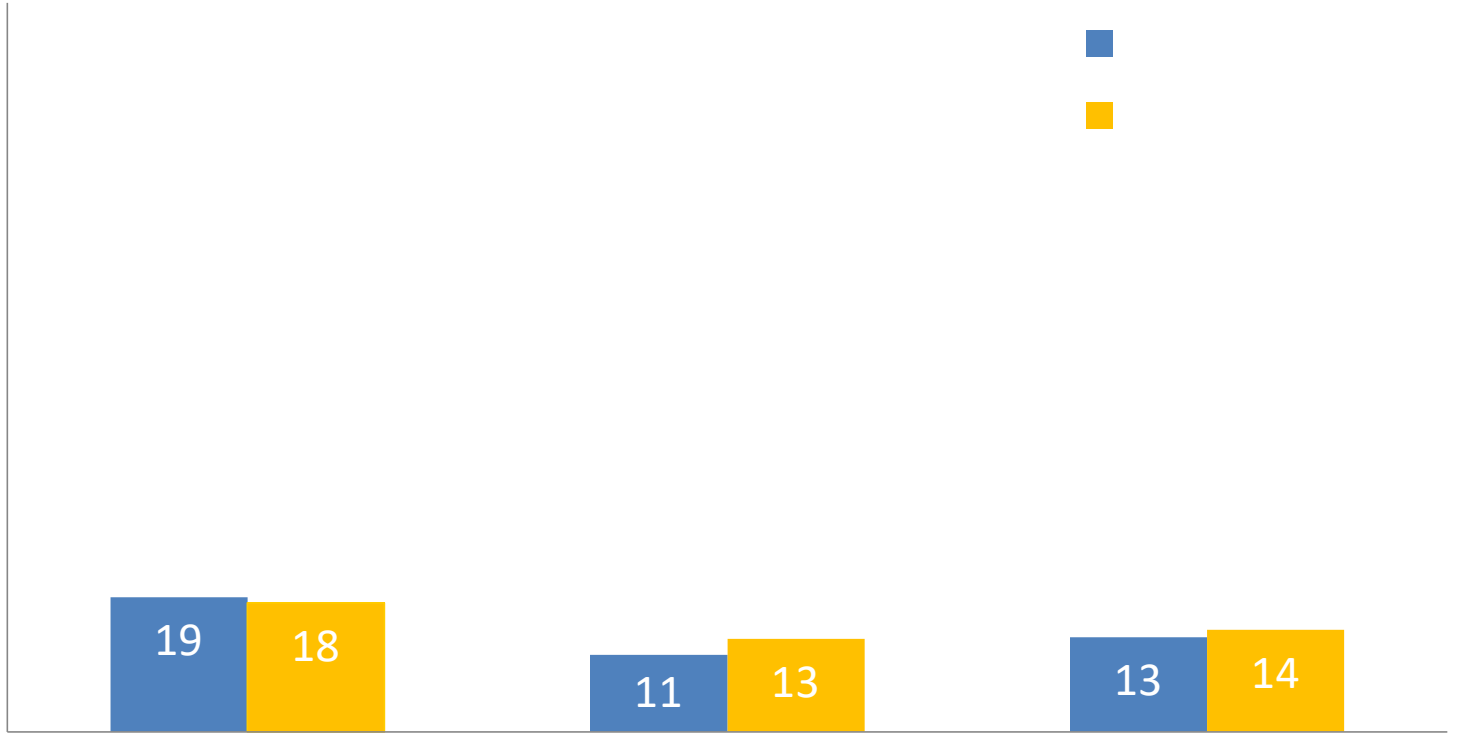
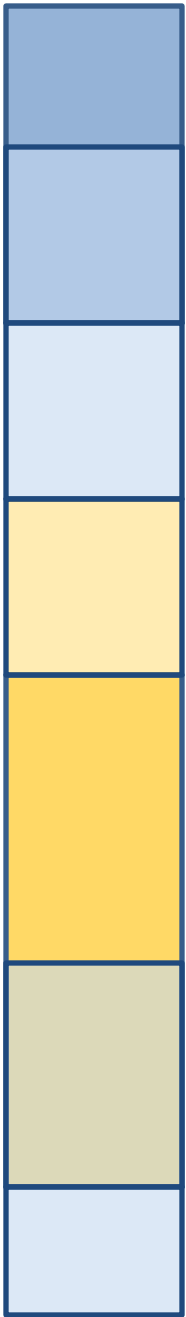


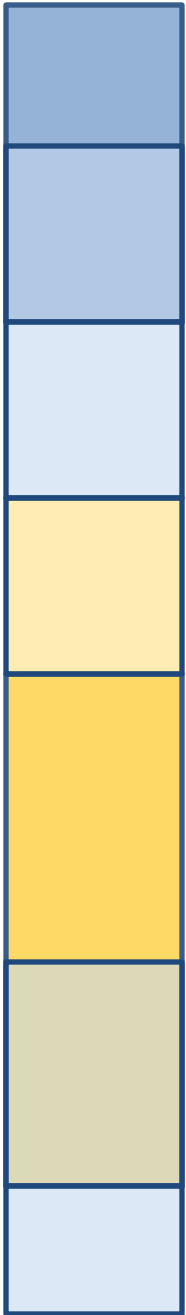




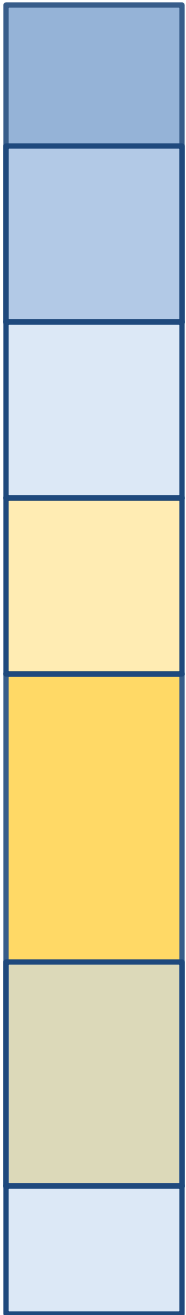




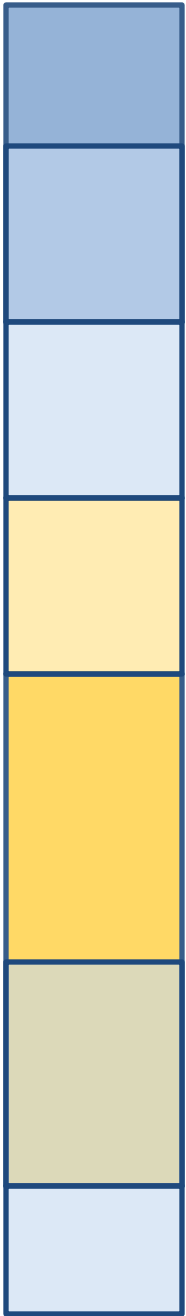




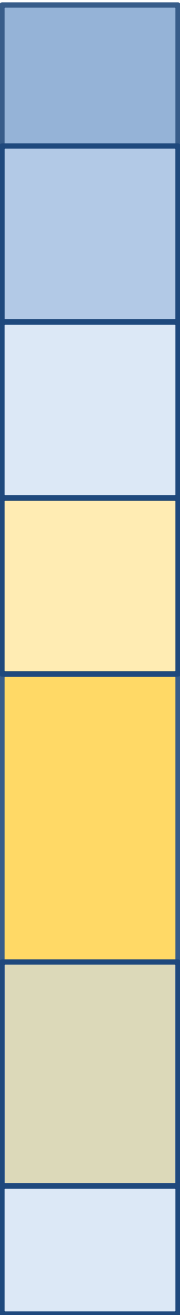
- Program and control group members also had similar outcomes in other areas
 - Psychosocial outcomes (e.g. self-esteem, social support, optimism)
 - Well-being (e.g. financial shortfalls, food insufficiency, housing instability, happiness, health)
 - Criminal justice involvement (arrest, conviction, incarceration)

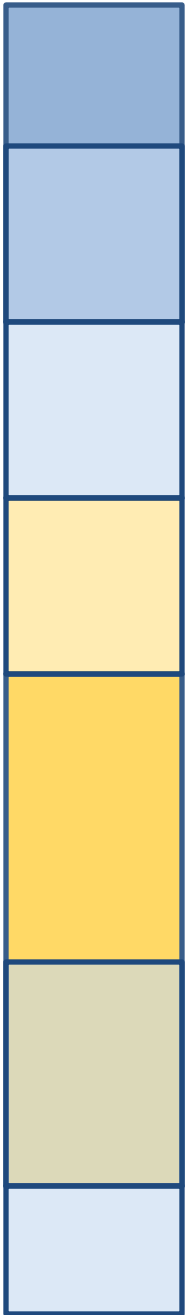


- Tested whether impacts on key outcomes differed by:
 - Cohort
 - Educational attainment at baseline
 - Length of disconnection
 - Gender



- Statistically significant differences in impacts on one-year employment rates for all subgroups
 - Impacts larger for males (33 pp v 25 pp), members of July and November cohorts (31 and 36 pp v 21 pp), less educated sample members (35 pp v 26 pp), and those who had been disconnected longer (36 pp v 23 pp)
- No notable differences in impacts on earnings or education

- 
- YAIP is well-implemented
 - Operates similarly across providers
 - High degree of fidelity to the program model
 - Serves a large swath of New York City's more job-ready disconnected youth
 - High participation rates
 - YAIP increased young people's receipt of employment support and other services
 - Some evidence that YAIP improves quality of young people's employment after program ends
 - Higher earnings, perhaps due to increased employment in permanent jobs with full-time hours



- Final YAIP evaluation report expected in mid-2018
- Report will include:
 - Longer-term (30-month) impact findings
 - Provider variation analysis
 - Benefit-cost findings



Melanie Skemer
Research Associate
MDRC

melanie.skemer@mdrc.org

To access the full interim report or executive summary,
visit:

www.mdrc.org