

Outcomes for Education and Vocational Training in CalWORKs Before and After the Great Recession

Michael A. Bono

Steve Metraux

Ann Elizabeth Montgomery

Kristen Camuso

Thomas Byrne

National Association for Welfare Research and Statistics

2013 Workshop

Chicago



FOCUS

- CalWORKs

- Outcomes related to Los Angeles County's Greater Avenues for Independence (GAIN) Program

- GAIN offers flexible mix of job search, education, job training, and work activities

FOCUS

- ✿ Outcomes related to Los Angeles County's Greater Avenues for Independence (GAIN) Program
- ✿ GAIN offers flexible mix of job search, **education**, job training, and work activities
- ✿ Outcomes related to Los Angeles County's Greater Avenues for Independence (GAIN) Program

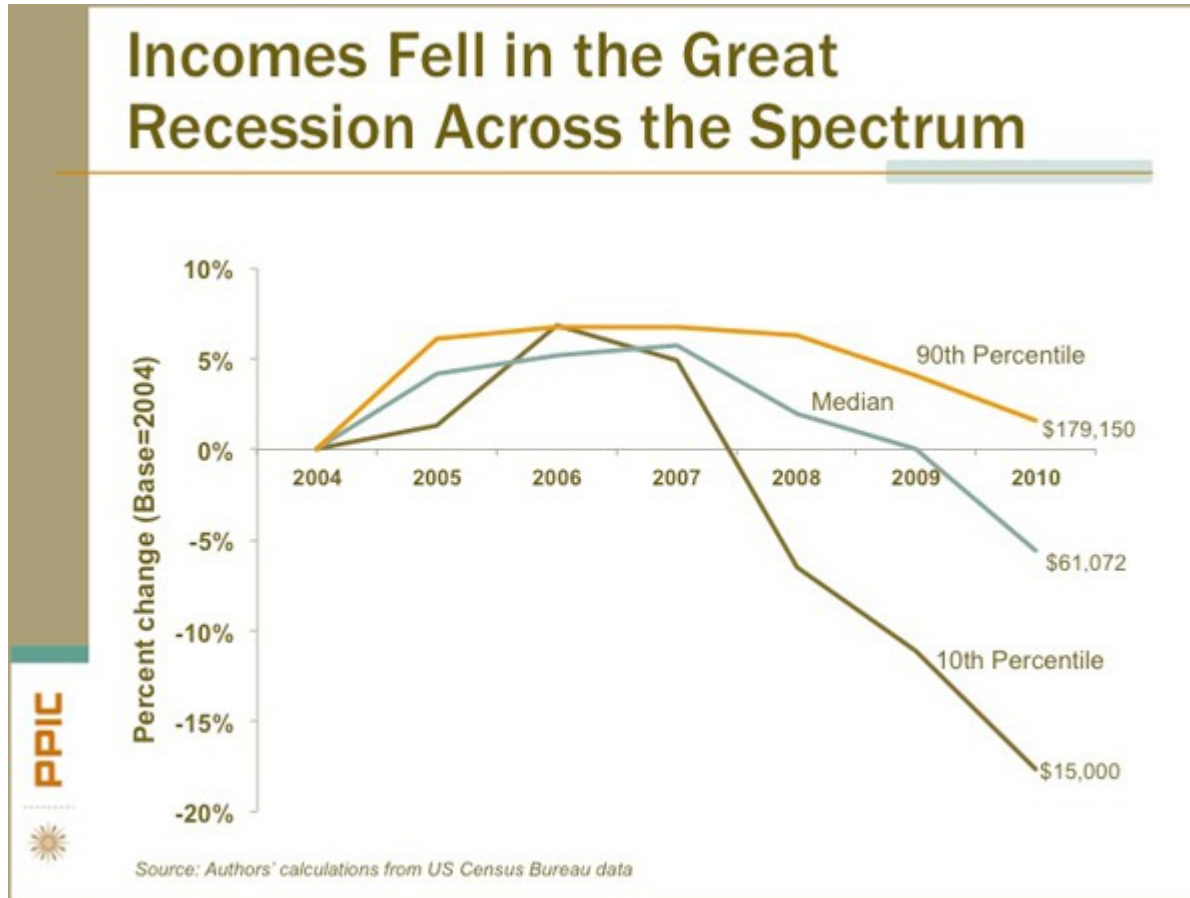
THREE EDUCATION COMPONENTS

- Self-Initiated Program (SIP)
- Vocational training (VOC)
- Remedial education (REM)

RESEARCH QUESTIONS

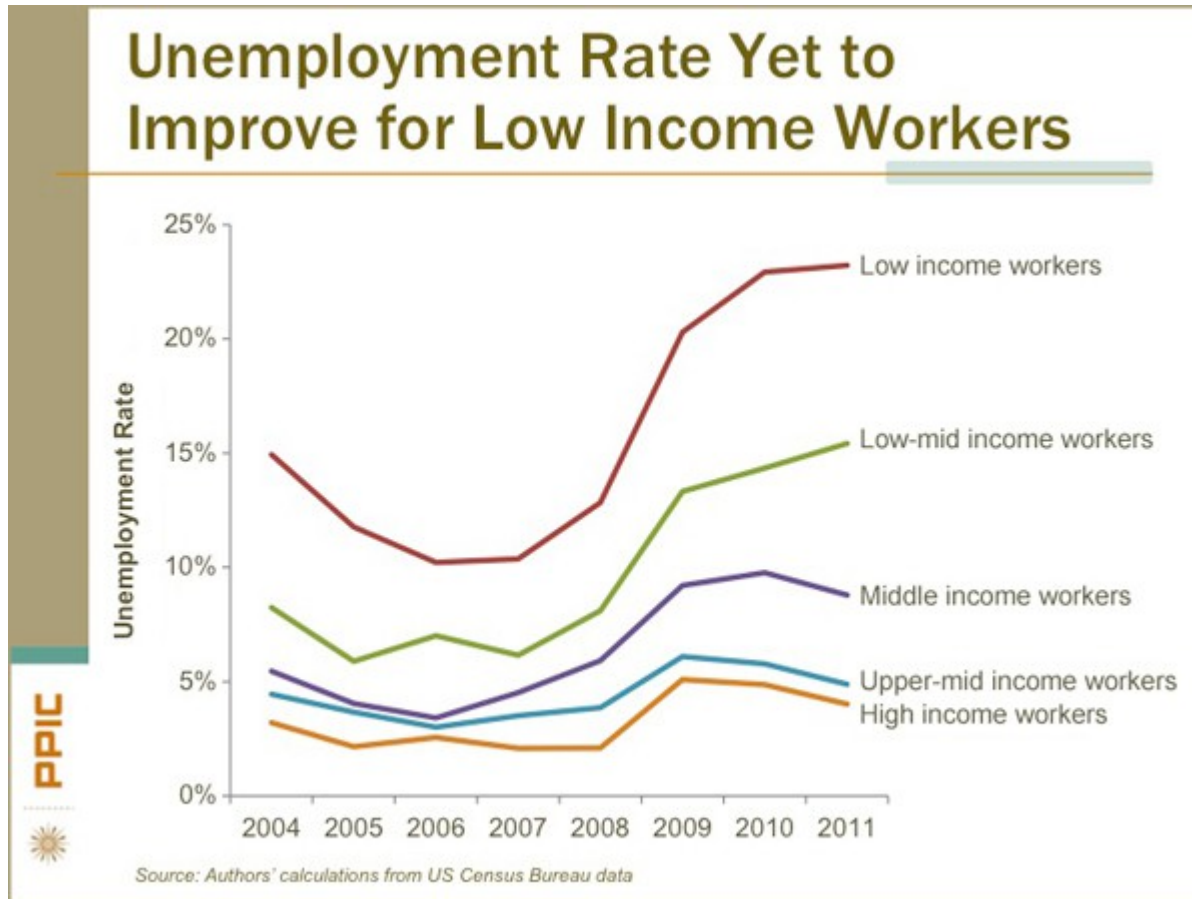
- Are there differences in the participant completion rate for SIP, VOC and REM?
- Are completion rates similar across education providers?
- What are the employment trends before and after ending an of the education component?

THE GREAT RECESSION IN CALIFORNIA



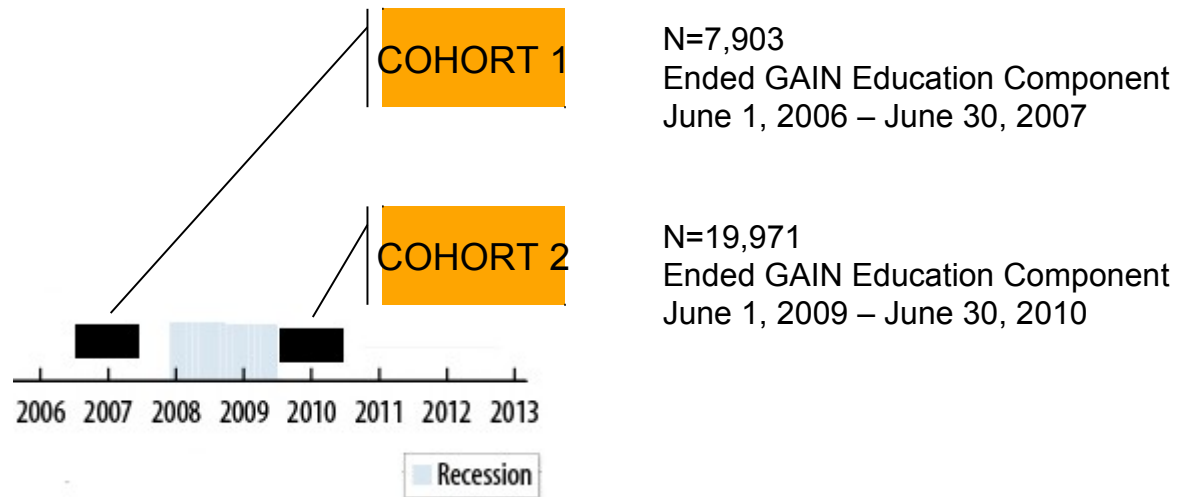
From Sarah Bohn's expert testimony, March 1, 2012

THE GREAT RECESSION IN CALIFORNIA



From Sarah Bohn's expert testimony, March 1, 2012

DESIGN



Tracked individuals two years prior to and two years after ending education component

Question 1: Are there differences in the participant completion rates for SIP, VOC and REM?

PRELIMINARY FINDINGS = YES

VOC +++

REM ++

SIP +

Pre-Recession ++

Post-Recession +

Question 2: **Are there differences in completion rates across education providers? YES**

PRELIMINARY FINDINGS

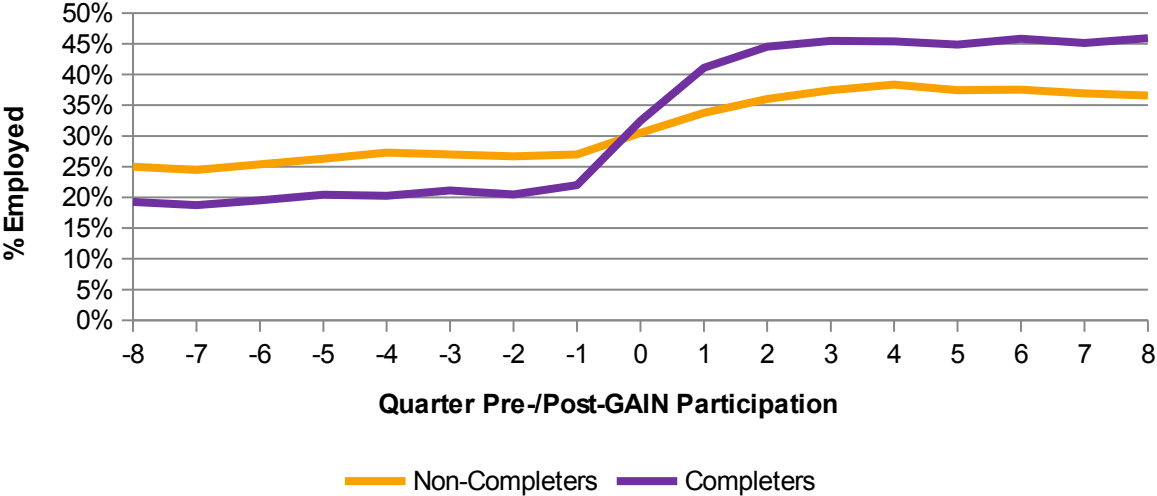
- On average 34.7% of participants completed their education component
- Completion rates ranged from 16.2% to 63.6% across education providers





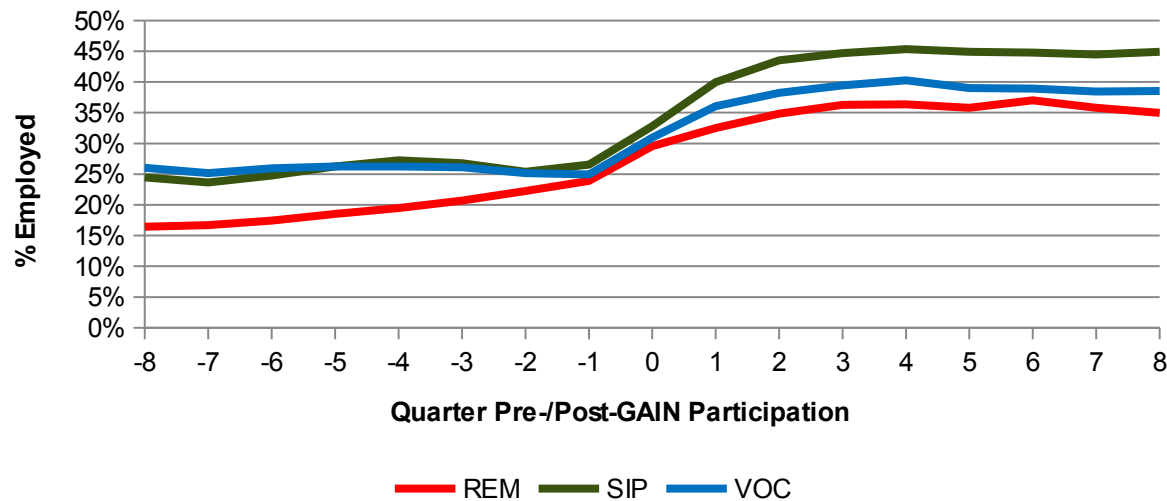
Question 3: What are the employment trends before and after ending an education component?

PRELIMINARY FINDINGS



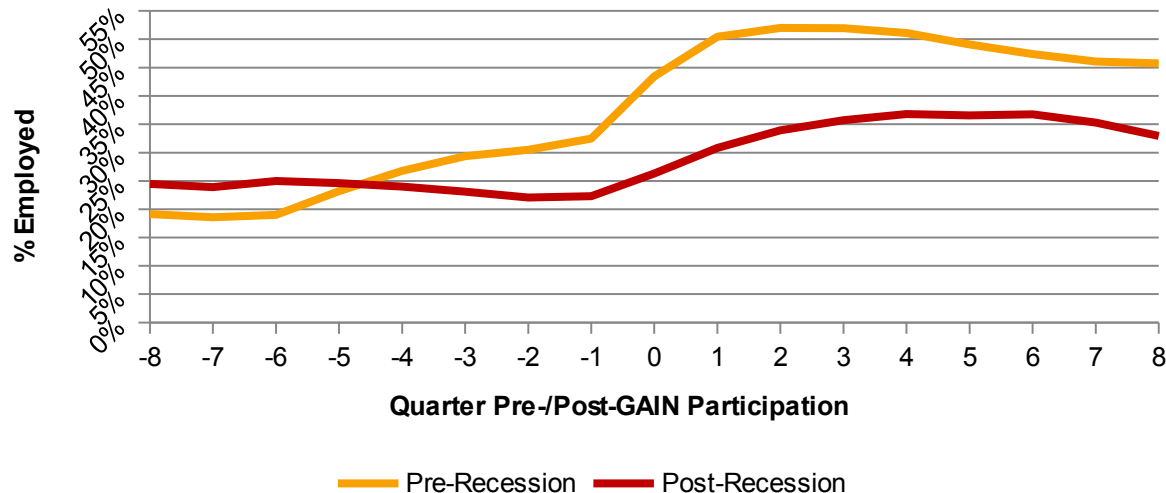
Question 3: What are the employment trends before and after ending an education component?

PRELIMINARY FINDINGS



Question 3: What are the employment trends before and after ending an education component?

PRELIMINARY FINDINGS



CONCLUSION

- Variability in component completion rates by education component
- Variability in component completion rate by education provider
- Across all components, a robust increase in employment following the end of an education component
- This increase was less pronounced following the Great Recession than before it

michaelbono@dpss.lacounty.gov